



**Water Monitoring Result at C7 - Windsor House
Mid-Flood Tide**

Date	Time	Weather Condition	Sampling Depth		Water Temperature			pH			Salinity			DO Saturation			DO			Turbidity			Suspended Solids	
					°C			-			ppt			%			mg/L			NTU			mg/L	
					Value	Average		Value	Average		Value	Average		Value	Average		Value	Average		Value	Average		Value	Average
27/2/2017	18:00	Cloudy	Middle	-	17.40	17.40	17.40	8.19	8.19	8.20	31.39	31.39	31.39	86.3	86.6	86.5	6.84	6.87	6.86	6.62	6.47	6.51	5	5.00
	18:01		Middle	-	17.40	17.40		8.20	8.20		31.39	31.39		86.4	86.7		6.85	6.87		6.50	6.44		5	
1/3/2017	9:45	Fine	Middle	-	18.00	18.00	18.00	8.27	8.27	8.28	31.28	31.28	31.28	93.3	93.3	93.5	7.33	7.32	7.34	3.18	3.15	3.16	5	4.00
	9:47		Middle	-	18.00	18.00		8.29	8.29		31.28	31.28		93.6	93.6		7.35	7.35		3.16	3.16		3	
3/3/2017	12:00	Fine	Middle	-	18.80	18.80	18.85	8.04	8.04	8.05	31.07	31.07	31.07	93.1	93.2	95.0	7.21	7.22	7.36	3.47	3.47	4.46	6	5.00
	12:02		Middle	-	18.90	18.90		8.05	8.06		31.06	31.06		96.8	97.0		7.49	7.51		3.45	7.43		4	
6/3/2017	12:35	Cloudy	Middle	-	19.70	19.70	19.80	8.12	8.12	8.14	31.10	31.10	31.10	96.3	96.4	96.2	7.32	7.32	7.31	1.29	1.29	1.29	5	4.50
	12:37		Middle	-	19.90	19.90		8.16	8.16		31.09	31.09		96.2	96.0		7.31	7.28		1.29	1.28		4	
8/3/2017	15:07	Fine	Middle	-	18.70	18.70	18.70	8.26	8.26	8.28	31.75	31.75	31.75	95.4	94.5	94.6	7.37	7.30	7.31	1.98	1.96	1.97	4	4.00
	15:09		Middle	-	18.70	18.70		8.30	8.30		31.74	31.74		94.9	93.7		7.33	7.24		1.96	1.97		4	
11/3/2017	18:24	Cloudy	Middle	-	18.60	18.60	18.60	8.30	8.30	8.31	31.83	31.83	31.84	90.2	89.5	89.1	6.98	6.93	6.89	5.92	5.93	5.86	4	4.00
	18:26		Middle	-	18.60	18.60		8.31	8.31		31.85	31.85		89.0	87.5		6.88	6.77		5.79	5.78		4	
13/3/2017	4:20	Cloudy	Middle	-	19.20	19.20	19.20	7.68	7.70	7.70	32.03	32.03	32.03	81.3	81.1	80.9	6.20	6.19	6.17	4.90	4.88	4.87	4	3.50
	4:21		Middle	-	19.20	19.20		7.70	7.72		32.03	32.03		80.8	80.2		6.17	6.12		4.86	4.84		3	
15/3/2017	10:50	Cloudy	Middle	-	18.60	18.60	18.55	8.26	8.26	8.27	31.73	31.73	31.73	96.7	96.8	96.5	7.50	7.50	7.48	2.26	2.26	2.28	4	5.00
	10:52		Middle	-	18.50	18.50		8.28	8.28		31.73	31.73		96.4	96.1		7.47	7.45		2.29	2.30		6	
17/3/2017	9:05	Fine	Middle	-	18.30	18.30	18.30	8.22	8.22	8.24	31.74	31.74	31.75	96.1	95.1	95.2	7.48	7.41	7.41	1.93	1.91	1.91	5	5.50
	9:07		Middle	-	18.30	18.30		8.25	8.25		31.76	31.76		94.8	94.6		7.38	7.37		1.90	1.88		6	
20/3/2017	11:40	Fine	Middle	-	20.00	20.00	20.20	8.17	8.17	8.18	31.54	31.54	31.53	94.1	94.7	94.6	7.08	7.12	7.11	2.23	2.22	2.22	5	4.50
	11:42		Middle	-	20.40	20.40		8.19	8.19		31.52	31.52		95.0	94.7		7.13	7.11		2.22	2.21		4	
22/3/2017	9:40	Cloudy	Middle	-	19.00	19.00	19.00	8.25	8.25	8.25	31.67	31.67	31.67	94.8	94.4	94.0	7.28	7.25	7.23	7.28	7.24	7.26	5	5.00
	9:42		Middle	-	19.00	19.00		8.25	8.25		31.67	31.67		93.9	93.0		7.24	7.15		7.24	7.29		5	
24/3/2017	14:05	Fine	Middle	-	20.60	20.60	20.70	8.24	8.24	8.25	32.16	32.16	32.14	96.6	96.8	96.8	7.18	7.19	7.18	6.08	6.08	6.08	5	4.00
	14:07		Middle	-	20.80	20.80		8.26	8.26		32.12	32.12		97.7	95.9		7.25	7.11		6.08	6.07		3	

Remarks:
Single underline denotes exceedance over Action Level.
Double underline denotes exceedance over Limit Level.



**Water Monitoring Result at C1 - HKCEC Extension
Mid-Flood Tide**

Date	Time	Weather Condition	Sampling Depth		Water Temperature			pH			Salinity			DO Saturation		DO		Turbidity		Suspended Solids				
					°C			-			ppt			%		mg/L		NTU		mg/L				
					Value	Average		Value	Average		Value	Average		Value	Average		Value	Average	Value	Average	Value	Average	Value	Average
27/2/2017	20:13	Cloudy	Middle	2.5	17.10	17.10	17.10	8.26	8.26	8.26	31.49	31.49	31.49	87.0	86.6	86.6	6.94	6.91	6.91	5.01	4.99	4.95	<2	<2
	20:14		Middle	2.5	17.10	17.10		8.26	8.26		31.49	31.49		86.5	86.2		6.90	6.87		4.89	4.92			
1/3/2017	8:50	Fine	Middle	3.0	17.10	17.10	17.10	8.32	8.32	8.32	31.35	31.35	31.35	92.9	93.0	93.2	7.41	7.42	7.43	3.45	3.35	3.38	3	3.50
	8:52		Middle	3.0	17.10	17.10		8.32	8.32		31.35	31.35		93.4	93.5		7.45	7.45		3.33	3.40		4	
3/3/2017	10:20	Fine	Middle	3.0	17.20	17.20	17.20	8.29	8.29	8.29	31.21	31.21	31.22	92.4	92.6	92.5	7.37	7.39	7.38	5.10	5.05	5.13	7	6.00
	10:22		Middle	3.0	17.20	17.20		8.29	8.29		31.22	31.22		92.4	92.4		7.37	7.37		5.15	5.20		5	
6/3/2017	11:35	Cloudy	Middle	3.0	18.70	18.70	18.75	8.23	8.23	8.24	31.20	31.20	31.20	89.7	90.6	90.5	6.94	7.01	7.00	1.14	1.01	1.01	3	3.00
	11:37		Middle	3.0	18.80	18.80		8.24	8.24		31.20	31.20		90.7	90.8		7.01	7.02		0.94	0.94		3	
8/3/2017	14:40	Fine	Middle	3.0	17.90	17.90	17.90	8.35	8.35	8.35	31.69	31.69	31.69	94.8	94.8	94.7	7.43	7.44	7.43	1.01	1.00	1.00	3	3.00
	14:42		Middle	3.0	17.90	17.90		8.35	8.35		31.69	31.69		94.7	94.3		7.43	7.40		1.00	0.98		3	
11/3/2017	17:48	Cloudy	Middle	3.5	18.00	18.00	18.00	8.32	8.32	8.33	31.81	31.81	31.82	85.4	84.1	83.8	6.68	6.57	6.55	6.42	6.63	6.55	2	3.00
	17:50		Middle	3.5	18.00	18.00		8.33	8.33		31.83	31.83		83.4	82.3		6.52	6.43		6.54	6.59		4	
13/3/2017	4:07	Cloudy	Middle	2.5	18.70	18.70	18.70	7.94	7.94	7.95	31.63	31.63	31.63	76.0	76.2	75.5	5.88	5.89	5.84	4.48	4.50	4.44	2	2.00
	4:08		Middle	2.5	18.70	18.70		7.95	7.95		31.63	31.63		74.8	74.9		5.79	5.79		4.42	4.37		2	
15/3/2017	10:25	Cloudy	Middle	2.5	17.30	17.30	17.35	8.33	8.33	8.34	31.81	31.84	31.84	84.6	83.2	83.2	6.70	6.59	6.59	2.39	2.45	2.41	3	3.50
	10:27		Middle	2.5	17.40	17.40		8.34	8.34		31.85	31.85		82.6	82.3		6.54	6.52		2.39	2.39		4	
17/3/2017	10:25	Fine	Middle	3.0	17.90	17.90	17.90	8.30	8.30	8.30	31.80	31.80	31.81	94.5	94.8	94.7	7.41	7.43	7.42	2.23	2.15	2.15	5	5.00
	10:27		Middle	3.0	17.90	17.90		8.30	8.30		31.81	31.81		94.8	94.6		7.44	7.41		2.10	2.10		5	
20/3/2017	11:05	Fine	Middle	2.5	19.70	19.70	19.80	8.23	8.23	8.24	31.59	31.59	31.61	94.1	93.5	94.0	7.13	7.08	7.12	2.15	2.20	2.23	4	4.00
	11:07		Middle	2.5	19.90	19.90		8.24	8.24		31.62	31.62		93.9	94.3		7.12	7.13		2.26	2.29		4	
22/3/2017	9:05	Cloudy	Middle	3.0	18.60	18.60	18.65	8.34	8.34	8.35	31.99	31.99	31.99	96.5	96.6	96.1	7.45	7.46	7.42	4.02	4.00	3.98	5	4.50
	9:07		Middle	3.0	18.70	18.70		8.35	8.35		31.99	31.99		95.7	95.4		7.39	7.37		3.94	3.94		4	
24/3/2017	16:05	Fine	Middle	3.0	19.90	19.90	19.95	8.33	8.33	8.34	32.33	32.33	32.33	97.6	98.1	97.8	7.33	7.37	7.35	3.85	3.95	3.93	2	2.50
	16:07		Middle	3.0	20.00	20.00		8.35	8.35		32.33	32.33		97.6	97.8		7.33	7.36		3.96	3.94		3	

Remarks:
Single underline denotes exceedance over Action Level.
Double underline denotes exceedance over Limit Level.



**Water Monitoring Result at P1 - HKCEC Phase I
Mid-Flood Tide**

Date	Time	Weather Condition	Sampling Depth		Water Temperature			pH			Salinity			DO Saturation			DO			Turbidity			Suspended Solids	
					°C			-			ppt			%			mg/L			NTU			mg/L	
					Value	Average		Value	Average		Value	Average		Value	Average		Value	Average		Value	Average		Value	Average
27/2/2017	19:45	Cloudy	Middle	2.5	17.20	17.20	17.20	8.08	8.08	8.10	31.43	31.43	31.43	87.8	88.2	87.8	6.99	7.01	6.99	4.70	4.68	4.85	4	4.00
	19:46		Middle	2.5	17.20	17.20		8.12	8.12		31.43	31.43		87.8	87.4		6.99	6.95		4.99	5.02		<2	
1/3/2017	8:30	Fine	Middle	3.0	17.40	17.40	17.40	8.17	8.17	8.20	31.24	31.24	31.24	94.9	94.8	94.7	7.54	7.53	7.52	2.64	2.59	2.61	3	4.00
	8:32		Middle	3.0	17.40	17.40		8.23	8.23		31.24	31.24		94.5	94.5		7.50	7.50		2.58	2.64		5	
3/3/2017	10:00	Fine	Middle	3.0	17.10	17.10	17.25	8.15	8.15	8.18	31.17	31.17	31.16	100.1	99.8	99.3	7.97	7.93	7.90	2.97	2.99	2.99	7	6.00
	10:02		Middle	3.0	17.40	17.40		8.21	8.21		31.15	31.15		99.0	98.1		7.88	7.80		3.00	3.00		5	
6/3/2017	11:15	Cloudy	Middle	3.0	19.50	19.50	19.65	8.11	8.11	8.14	31.23	31.23	31.23	91.4	92.5	92.3	6.96	7.04	7.02	0.57	0.56	0.56	<2	<2
	11:17		Middle	3.0	19.80	19.80		8.16	8.16		31.22	31.22		92.7	92.6		7.05	7.04		0.56	0.56		<2	
8/3/2017	14:20	Fine	Middle	3.0	18.40	18.40	18.15	8.14	8.14	8.20	31.73	31.73	31.73	97.8	97.6	97.2	7.68	7.66	7.63	0.48	0.51	0.51	7	7.50
	14:22		Middle	3.0	17.90	17.90		8.25	8.25		31.73	31.73		97.1	96.1		7.62	7.55		0.52	0.51		8	
11/3/2017	17:32	Cloudy	Middle	2.5	18.10	18.10	18.15	8.20	8.20	8.23	31.96	31.96	31.93	83.7	81.7	82.0	6.52	6.37	6.89	3.76	3.74	3.75	2	2.00
	17:54		Middle	2.5	18.20	18.20		8.25	8.25		31.89	31.89		81.6	80.9		6.36	8.31		3.76	3.72		2	
13/3/2017	5:33	Cloudy	Middle	2.5	18.90	18.90	18.90	8.05	8.05	8.05	31.77	31.77	31.78	80.8	81.2	80.6	6.22	6.25	6.20	4.99	4.96	4.98	<2	3.00
	5:34		Middle	2.5	18.90	18.90		8.05	8.05		31.78	31.78		80.4	80.1		6.18	6.16		4.98	5.00		3	
15/3/2017	10:05	Cloudy	Middle	2.5	16.30	16.30	16.30	8.24	8.24	8.25	31.77	31.77	31.76	78.7	78.2	78.3	6.30	6.26	6.27	1.91	1.93	1.93	7	6.50
	10:07		Middle	2.5	16.30	16.30		8.26	8.26		31.74	31.74		78.0	78.1		6.25	6.25		1.94	1.94		6	
17/3/2017	10:05	Fine	Middle	3.0	20.00	20.00	20.00	8.05	8.05	8.13	31.51	31.51	31.62	98.3	96.8	97.0	7.69	7.57	7.58	2.26	2.30	2.24	5	4.50
	10:07		Middle	3.0	20.00	20.00		8.20	8.20		31.72	31.72		96.5	96.3		7.55	7.52		2.23	2.17		4	
20/3/2017	10:45	Fine	Middle	2.5	20.70	20.70	20.85	8.07	8.07	8.12	31.64	31.64	31.64	101.5	101.0	100.8	7.54	7.49	7.48	2.16	2.21	2.20	3	3.50
	10:47		Middle	2.5	21.00	21.00		8.16	8.16		31.64	31.64		100.6	100.1		7.46	7.42		2.21	2.21		4	
22/3/2017	8:45	Cloudy	Middle	3.0	18.60	18.60	18.65	8.21	8.21	8.24	31.98	31.98	31.98	97.1	96.2	96.2	7.51	7.43	7.43	4.60	4.49	4.56	4	4.00
	8:47		Middle	3.0	18.70	18.70		8.27	8.27		31.97	31.97		95.5	95.8		7.37	7.39		4.54	4.61		4	
24/3/2017	15:45	Fine	Middle	3.0	20.50	20.50	20.70	8.18	8.18	8.21	32.39	32.39	32.38	102.9	102.0	102.3	7.62	7.55	7.57	3.50	3.56	3.60	<2	<2
	15:47		Middle	3.0	20.90	20.90		8.23	8.23		32.37	32.37		101.9	102.3		7.54	7.56		3.66	3.67		<2	

Remarks:
 Single underline denotes exceedance over Action Level.
 Double underline denotes exceedance over Limit Level.



**Water Monitoring Result at P3 - APA
Mid-Flood Tide**

Date	Time	Weather Condition	Sampling Depth		Water Temperature			pH			Salinity			DO Saturation			DO			Turbidity			Suspended Solids	
					°C			-			ppt			%			mg/L			NTU			mg/L	
					Value	Average		Value	Average		Value	Average		Value	Average		Value	Average		Value	Average		Value	Average
27/2/2017	19:52	Cloudy	Middle	2.5	17.00	17.00	17.05	8.19	8.19	8.20	31.44	31.44	31.44	84.8	85.8	86.0	6.77	6.85	6.86	4.61	4.39	4.53	<2	<2
	19:53		Middle	2.5	17.10	17.10		8.21	8.21		31.44	31.44		86.4	86.8		6.89	6.93		4.53	4.59			
1/3/2017	8:35	Fine	Middle	3.0	17.20	17.20	17.20	8.25	8.25	8.26	31.27	31.27	31.27	92.5	92.5	92.6	7.34	7.34	7.35	3.51	3.49	3.47	4	4.00
	8:37		Middle	3.0	17.20	17.20		8.27	8.27		31.27	31.27		92.7	92.7		7.35	7.35		3.45	3.42		4	
3/3/2017	10:05	Fine	Middle	3.0	17.00	17.00	17.00	8.23	8.23	8.24	31.18	31.18	31.18	95.2	94.9	95.0	7.62	7.60	7.60	3.63	3.61	3.59	6	5.00
	10:07		Middle	3.0	17.00	17.00		8.25	8.25		31.18	31.18		94.9	95.0		7.59	7.60		3.57	3.54		4	
6/3/2017	11:20	Cloudy	Middle	3.0	19.00	19.00	19.05	8.19	8.19	8.20	31.23	31.23	31.23	89.6	89.5	89.3	6.90	6.89	6.87	0.64	0.63	0.66	<2	<2
	11:22		Middle	3.0	19.10	19.10		8.20	8.20		31.22	31.22		88.7	89.3		6.83	6.87		0.69	0.69			
8/3/2017	14:25	Fine	Middle	3.0	17.90	17.90	17.80	8.26	8.26	8.28	31.67	31.67	31.73	95.3	95.3	95.2	7.50	7.50	7.49	1.32	1.42	1.37	3	4.00
	14:27		Middle	3.0	17.70	17.70		8.30	8.30		31.79	31.79		95.1	94.9		7.48	7.46		1.38	1.36		5	
11/3/2017	17:36	Cloudy	Middle	2.5	18.00	18.00	18.00	8.27	8.27	8.28	31.85	31.85	31.83	82.6	82.6	82.2	6.46	6.47	6.43	4.45	4.34	4.32	5	5.00
	17:38		Middle	2.5	18.00	18.00		8.28	8.28		31.81	31.81		82.3	81.3		6.43	6.36		4.25	4.24		5	
13/3/2017	5:40	Cloudy	Middle	2.5	18.80	18.80	18.80	7.98	7.98	7.99	31.83	31.83	31.84	82.4	82.3	81.8	6.35	6.34	6.30	3.66	3.42	3.45	<2	2.00
	5:41		Middle	2.5	18.80	18.80		7.99	7.99		31.84	31.84		81.0	81.5		6.23	6.28		3.38	3.34		2	
15/3/2017	10:10	Cloudy	Middle	2.5	16.90	16.90	16.90	8.20	8.28	8.27	31.73	31.73	31.74	78.6	79.1	79.2	6.29	6.33	6.34	1.34	1.32	1.31	3	3.50
	10:12		Middle	2.5	16.90	16.90		8.29	8.29		31.74	31.74		79.6	79.6		6.37	6.38		1.30	1.29		4	
17/3/2017	10:10	Fine	Middle	3.0	17.80	17.80	17.80	8.23	8.23	8.24	31.75	31.75	31.75	95.9	95.9	95.8	7.53	7.54	7.53	2.02	2.07	2.04	4	4.50
	10:12		Middle	3.0	17.80	17.80		8.25	8.25		31.74	31.74		95.9	95.5		7.53	7.50		2.06	2.00		5	
20/3/2017	10:50	Fine	Middle	2.5	20.10	20.10	20.15	8.19	8.19	8.20	31.58	31.58	31.60	97.0	95.5	96.8	7.31	7.19	7.29	1.90	1.93	1.93	2	2.00
	10:52		Middle	2.5	20.20	20.20		8.20	8.20		31.61	31.61		96.8	97.7		7.28	7.37		1.94	1.94		<2	
22/3/2017	8:50	Cloudy	Middle	3.0	18.50	18.50	18.50	8.29	8.29	8.31	32.05	32.05	32.05	95.6	94.8	95.5	7.40	7.33	7.39	3.95	3.95	3.96	4	4.50
	8:52		Middle	3.0	18.50	18.50		8.32	8.32		32.04	32.04		95.6	96.1		7.40	7.44		3.96	3.97		5	
24/3/2017	15:50	Fine	Middle	3.0	20.10	20.10	20.15	8.26	8.26	8.28	32.34	32.34	32.34	101.3	100.9	100.7	7.59	7.56	7.55	2.50	2.49	2.59	<2	<2
	15:52		Middle	3.0	20.20	20.20		8.29	8.29		32.34	32.34		100.1	100.4		7.52	7.54		2.67	2.68		<2	

Remarks:
Single underline denotes exceedance over Action Level.
Double underline denotes exceedance over Limit Level.



**Water Monitoring Result at P4 - SOC
Mid-Flood Tide**

Date	Time	Weather Condition	Sampling Depth		Water Temperature			pH			Salinity			DO Saturation			DO			Turbidity			Suspended Solids	
					°C			-			ppt			%			mg/L			NTU			mg/L	
					Value	Average		Value	Average		Value	Average		Value	Average		Value	Average		Value	Average		Value	Average
27/2/2017	19:58	Cloudy	Middle	2.5	17.00	16.90	16.93	8.23	8.23	8.24	31.58	31.58	31.58	87.3	87.4	87.3	6.97	6.98	6.98	4.89	4.90	4.83	2	2.50
	19:59		Middle	2.5	16.90	16.90		8.24	8.24		31.58	31.58		87.3	87.2		6.98	6.97		4.82	4.72		3	
1/3/2017	8:40	Fine	Middle	3.0	17.10	17.10	17.15	8.29	8.29	8.30	31.33	31.33	31.34	92.6	92.9	92.8	7.39	7.41	7.41	4.09	4.00	3.97	5	5.00
	8:42		Middle	3.0	17.20	17.20		8.30	8.30		31.34	31.34		92.9	92.9		7.41	7.41		3.91	3.88		5	
3/3/2017	10:10	Fine	Middle	3.0	17.10	17.10	17.10	8.26	8.26	8.27	31.20	31.20	31.21	90.7	90.6	90.8	7.25	7.24	7.26	4.81	4.78	4.78	5	6.00
	10:12		Middle	3.0	17.10	17.10		8.27	8.27		31.21	31.21		91.2	90.8		7.28	7.25		4.77	4.76		7	
6/3/2017	11:25	Cloudy	Middle	3.0	18.80	18.80	18.85	8.21	8.21	8.22	31.20	31.20	31.20	90.4	90.6	90.5	6.99	7.00	7.00	0.80	0.85	0.87	<2	<2
	11:27		Middle	3.0	18.90	18.90		8.22	8.22		31.20	31.20		90.6	90.5		7.00	6.99		0.93	0.89		<2	
8/3/2017	14:30	Fine	Middle	3.0	17.80	17.80	17.85	8.31	8.31	8.32	31.75	31.75	31.75	94.4	93.9	94.3	7.41	7.37	7.40	1.27	1.28	1.28	4	3.50
	14:32		Middle	3.0	17.90	17.90		8.33	8.33		31.75	31.75		94.6	94.1		7.42	7.38		1.29	1.29		3	
11/3/2017	17:40	Cloudy	Middle	2.5	18.00	18.00	18.00	8.29	8.29	8.30	31.72	31.72	31.78	86.3	84.6	84.2	6.76	6.62	6.65	4.65	4.49	4.56	3	3.50
	17:42		Middle	2.5	18.00	18.00		8.30	8.30		31.84	31.84		83.4	82.6		6.53	6.67		4.49	4.62		4	
13/3/2017	5:50	Cloudy	Middle	2.5	18.70	18.70	18.75	7.85	7.85	7.86	31.50	31.50	31.52	78.7	78.4	78.5	6.08	6.05	6.06	5.43	5.40	5.34	3	3.00
	5:51		Middle	2.5	18.80	18.80		7.87	7.87		31.53	31.53		78.6	78.2		6.07	6.04		5.30	5.23		<2	
15/3/2017	10:15	Cloudy	Middle	2.5	16.90	16.90	16.95	8.29	8.29	8.30	31.72	31.72	31.79	86.2	84.5	83.9	6.88	6.74	6.69	2.41	2.33	2.40	6	5.00
	10:17		Middle	2.5	17.00	17.00		8.31	8.31		31.85	31.85		82.8	82.0		6.61	6.54		2.41	2.44		4	
17/3/2017	10:15	Fine	Middle	3.0	17.70	17.70	17.70	8.26	8.26	8.27	31.82	31.82	31.82	96.0	94.7	94.7	7.53	7.45	7.45	2.72	2.98	2.91	6	6.00
	10:17		Middle	3.0	17.70	17.70		8.28	8.28		31.81	31.81		94.2	93.9		7.41	7.39		2.96	2.99		6	
20/3/2017	10:55	Fine	Middle	2.5	19.80	19.80	19.90	8.21	8.21	8.22	31.67	31.67	31.67	93.9	94.3	93.9	7.09	7.12	7.09	2.92	2.69	2.69	5	4.50
	10:57		Middle	2.5	20.00	20.00		8.22	8.22		31.66	31.66		93.8	93.4		7.08	7.05		2.58	2.58		4	
22/3/2017	8:55	Cloudy	Middle	3.0	18.80	18.80	18.70	8.33	8.33	8.34	32.04	32.04	32.05	95.0	95.1	95.1	7.33	7.34	7.34	4.57	4.49	4.46	4	3.50
	8:57		Middle	3.0	18.60	18.60		8.34	8.34		32.06	32.06		95.2	95.2		7.35	7.35		4.44	4.33		3	
24/3/2017	15:55	Fine	Middle	3.0	19.90	19.90	19.95	8.23	8.23	8.27	32.36	32.36	32.37	98.5	98.8	98.6	7.40	7.42	7.41	3.72	3.89	3.83	3	3.00
	15:57		Middle	3.0	20.00	20.00		8.31	8.31		32.37	32.37		98.5	98.5		7.40	7.40		3.85	3.85		3	

Remarks:
 Single underline denotes exceedance over Action Level.
 Double underline denotes exceedance over Limit Level.



**Water Monitoring Result at P5 - WCT / RT / IT
Mid-Flood Tide**

Date	Time	Weather Condition	Sampling Depth		Water Temperature			pH			Salinity			DO Saturation			DO			Turbidity			Suspended Solids	
					°C			-			ppt			%			mg/L			NTU			mg/L	
					Value	Average		Value	Average		Value	Average		Value	Average		Value	Average		Value	Average		Value	Average
27/2/2017	20:06	Cloudy	Middle	2.5	17.00	17.00	17.00	8.27	8.27	8.27	31.56	31.56	31.56	88.2	88.1	88.1	7.04	7.03	7.03	4.84	4.88	4.81	2	2.50
	20:07		Middle	2.5	17.00	17.00		8.27	8.27		31.56	31.56		88.3	87.8		7.04	7.01		4.83	4.69		3	
1/3/2017	8:45	Fine	Middle	3.0	17.10	17.10	17.10	8.31	8.31	8.32	31.34	31.34	31.35	93.0	93.3	93.4	7.43	7.44	7.45	3.84	3.73	3.75	5	4.50
	8:47		Middle	3.0	17.10	17.10		8.32	8.32		31.35	31.35		93.4	93.7		7.46	7.48		3.72	3.70		4	
3/3/2017	10:15	Fine	Middle	3.0	17.20	17.20	17.15	8.28	8.28	8.28	31.21	31.21	31.24	90.2	90.0	90.0	7.20	7.19	7.19	4.45	4.26	4.34	7	8.00
	10:17		Middle	3.0	17.10	17.10		8.28	8.28		31.32	31.22		89.9	89.9		7.18	7.18		4.33	4.33		9	
6/3/2017	11:30	Cloudy	Middle	3.0	18.80	18.80	18.85	8.22	8.22	8.23	31.18	31.18	31.18	89.1	89.7	89.5	6.89	6.93	6.92	0.77	0.78	0.79	2	2.50
	11:32		Middle	3.0	18.90	18.90		8.24	8.24		31.18	31.18		89.5	89.6		6.92	6.92		0.79	0.80		3	
8/3/2017	14:35	Fine	Middle	3.0	17.90	17.90	17.90	8.34	8.34	8.35	31.70	31.70	31.71	93.9	93.8	93.2	7.37	7.36	7.31	0.98	1.00	1.00	3	2.50
	14:37		Middle	3.0	17.90	17.90		8.35	8.35		31.72	31.72		92.7	92.4		7.27	7.25		1.01	1.01		2	
11/3/2017	17:44	Cloudy	Middle	2.5	18.00	18.00	18.05	8.31	8.31	8.32	31.60	31.60	31.72	85.6	84.5	83.9	6.69	6.61	6.56	4.25	4.24	4.27	3	2.50
	17:46		Middle	2.5	18.10	18.10		8.32	8.32		31.84	31.84		83.4	82.1		6.52	6.42		4.28	4.31		2	
13/3/2017	7:35	Cloudy	Middle	2.5	18.70	18.70	18.70	8.03	8.03	8.03	31.48	31.48	31.48	75.9	76.1	76.1	5.87	5.90	5.88	4.06	4.16	4.16	2	2.50
	7:36		Middle	2.5	18.70	18.70		8.03	8.03		31.48	31.48		76.2	76.0		5.89	5.87		4.20	4.23		3	
15/3/2017	10:20	Cloudy	Middle	2.5	16.90	16.90	17.10	8.31	8.31	8.31	31.36	31.36	31.61	85.5	82.4	83.0	6.78	6.54	6.58	1.92	1.89	1.86	3	4.00
	10:22		Middle	2.5	17.30	17.30		8.33	8.30		31.86	31.86		81.9	82.0		6.50	6.51		1.86	1.78		5	
17/3/2017	10:20	Fine	Middle	3.0	17.70	17.70	17.75	8.28	8.28	8.29	31.69	31.69	31.75	92.2	92.3	92.8	7.25	7.26	7.30	2.12	2.15	2.12	5	4.50
	10:22		Middle	3.0	17.80	17.80		8.29	8.29		31.80	31.80		93.2	93.6		7.32	7.35		2.10	2.10		4	
20/3/2017	11:00	Fine	Middle	2.5	19.60	19.60	19.65	8.23	8.23	8.23	31.51	31.51	31.57	95.4	95.2	95.2	7.25	7.23	7.23	2.35	2.32	2.30	3	2.50
	11:02		Middle	2.5	19.70	19.70		8.23	8.23		31.62	31.62		95.0	95.3		7.21	7.23		2.27	2.25		2	
22/3/2017	9:00	Cloudy	Middle	3.0	18.60	18.60	18.60	8.35	8.35	8.35	31.96	31.96	31.96	87.6	91.1	91.6	6.77	7.10	7.09	3.35	3.32	3.27	4	5.00
	9:05		Middle	3.0	18.60	18.60		8.35	8.35		31.96	31.96		93.8	93.9		7.24	7.25		3.25	3.14		6	
24/3/2017	16:00	Fine	Middle	3.0	19.90	19.90	19.95	8.32	8.32	8.33	32.31	32.31	32.31	99.3	99.3	99.1	7.47	7.47	7.45	4.24	4.38	4.27	3	2.50
	16:02		Middle	3.0	20.00	20.00		8.33	8.33		32.31	32.31		98.8	98.9		7.43	7.44		4.35	4.12		2	

Remarks:
Single underline denotes exceedance over Action Level.
Double underline denotes exceedance over Limit Level.



**Water Monitoring Result at RW21-P789 - GEC / CRB / SHK
Mid-Flood Tide**

Date	Time	Weather Condition	Sampling Depth		Water Temperature			pH			Salinity			DO Saturation			DO			Turbidity			Suspended Solids	
					°C			-			ppt			%			mg/L			NTU			mg/L	
					Value	Average		Value	Average		Value	Average		Value	Average		Value	Average		Value	Average		Value	Average
27/2/2017	18:45	Cloudy	Middle	4.0	17.20	17.20	17.20	8.13	8.13	8.14	31.49	31.49	31.49	84.9	85.4	85.2	6.76	6.81	6.79	4.30	4.35	4.27	7	5.00
	18:46		Middle	4.0	17.20	17.20		8.15	8.15		31.49	31.49		85.4	85.1		6.80	6.78		4.23	4.21		3	
1/3/2017	9:05	Fine	Middle	3.5	17.50	17.50	17.55	8.22	8.22	8.25	31.31	31.31	31.32	98.4	97.6	97.5	7.79	7.72	7.71	2.95	2.80	2.92	4	4.00
	9:07		Middle	3.5	17.60	17.60		8.27	8.27		31.32	31.32		97.2	96.9		7.70	7.63		2.95	2.97		4	
3/3/2017	10:25	Fine	Middle	3.5	17.60	17.60	17.60	8.22	8.22	8.24	31.18	31.18	31.18	94.0	93.2	93.2	7.45	7.38	7.39	3.00	3.08	3.10	4	4.00
	10:27		Middle	3.5	17.60	17.60		8.25	8.25		31.18	31.18		93.0	92.7		7.37	7.34		3.14	3.16		4	
6/3/2017	12:10	Cloudy	Middle	3.5	19.20	19.20	19.40	8.05	8.05	8.10	31.24	31.24	31.23	96.0	96.2	95.7	7.34	7.35	7.32	0.80	0.71	0.72	3	3.50
	12:12		Middle	3.5	19.60	19.60		8.14	8.14		31.22	31.22		95.4	95.3		7.29	7.28		0.64	0.72		4	
8/3/2017	14:50	Fine	Middle	4.0	18.00	18.00	18.05	8.25	8.25	8.29	31.72	31.72	31.72	99.2	99.0	98.6	7.76	7.75	7.71	0.93	0.75	0.84	3	3.00
	14:52		Middle	4.0	18.10	18.10		8.32	8.32		31.72	31.72		98.3	97.7		7.68	7.64		0.94	0.73		3	
11/3/2017	18:02	Cloudy	Middle	3.5	18.10	18.10	18.10	8.28	8.28	8.29	31.95	31.95	31.95	79.0	78.0	77.3	6.16	6.08	6.03	4.63	4.70	4.70	7	6.50
	18:04		Middle	3.5	18.10	18.10		8.30	8.30		31.94	31.94		76.5	75.8		5.97	5.91		4.73	4.75		6	
13/3/2017	4:38	Cloudy	Middle	3.5	19.10	19.10	19.15	7.74	7.74	7.74	30.98	30.98	30.98	72.0	73.0	72.9	5.53	5.61	5.61	3.60	3.62	3.55	<2	<2
	4:39		Middle	3.5	19.20	19.20		7.74	7.74		30.98	30.98		73.4	73.2		5.65	5.63		3.54	3.43		<2	
15/3/2017	10:43	Cloudy	Middle	3.5	17.90	17.90	17.85	8.26	8.26	8.29	31.83	31.82	31.85	83.9	82.4	81.1	6.58	6.46	6.36	2.63	2.47	2.50	3	4.00
	10:45		Middle	3.5	17.80	17.80		8.31	8.31		31.87	31.87		80.1	78.1		6.28	6.13		2.46	2.45		5	
17/3/2017	10:40	Fine	Middle	3.5	18.10	18.10	18.10	8.15	8.15	8.20	31.79	31.79	31.79	101.6	100.8	99.4	8.01	7.88	7.78	2.33	2.45	2.39	5	5.00
	10:42		Middle	3.5	18.10	18.10		8.25	8.25		31.79	31.79		98.1	97.1		7.66	7.57		2.40	2.39		5	
20/3/2017	11:30	Fine	Middle	3.5	19.70	19.70	19.75	8.17	8.17	8.19	31.64	31.64	31.64	93.0	92.6	92.7	7.03	7.01	7.01	1.92	1.90	1.91	4	4.00
	11:32		Middle	3.5	19.80	19.80		8.20	8.20		31.63	31.63		92.4	92.8		6.98	7.01		1.90	1.90		4	
22/3/2017	9:25	Cloudy	Middle	4.0	18.80	18.80	18.85	8.31	8.31	8.32	32.00	32.00	31.97	92.0	91.7	91.7	7.08	7.06	7.05	3.94	3.98	3.86	4	4.50
	9:27		Middle	4.0	18.90	18.90		8.33	8.33		31.94	31.94		91.7	91.2		7.05	7.01		3.76	3.75		5	
24/3/2017	13:35	Fine	Middle	3.5	20.60	20.60	20.85	8.23	8.23	8.25	32.34	32.34	32.32	105.0	103.9	103.6	7.77	7.67	7.65	3.97	3.99	4.01	2	2.00
	13:37		Middle	3.5	21.10	21.10		8.27	8.27		32.30	32.30		103.4	102.2		7.63	7.54		4.09	4.00		2	

Remarks:
Single underline denotes exceedance over Action Level.
Double underline denotes exceedance over Limit Level.



**Water Monitoring Result at WSD19 - Sheung Wan
Mid-Flood Tide**

Date	Time	Weather Condition	Sampling Depth		Water Temperature			pH			Salinity			DO Saturation			DO			Turbidity			Suspended Solids	
					°C			-			ppt			%			mg/L			NTU			mg/L	
					Value	Value	Average	Value	Value	Average	Value	Value	Average	Value	Value	Average	Value	Value	Average	Value	Value	Average	Value	Value
27/2/2017	20:25	Cloudy	Middle	3.5	17.10	17.10	17.10	8.23	8.23	8.23	31.43	31.43	31.45	85.1	85.2	85.1	6.79	6.79	6.78	4.76	4.38	4.46	3	3.00
	20:26		Middle	3.5	17.10	17.10		8.23	8.23		31.46	31.46		85.0	84.9		6.78	6.77		4.35	4.33		<2	
1/3/2017	7:30	Fine	Middle	3.0	17.50	17.50	17.55	8.13	8.13	8.16	31.30	31.30	31.31	96.2	96.6	96.1	7.62	7.64	7.61	3.64	3.72	3.76	6	5.50
	7:32		Middle	3.0	17.60	17.60		8.18	8.18		31.31	31.31		96.0	95.6		7.60	7.57		3.83	3.83		5	
3/3/2017	8:03	Fine	Middle	3.5	17.30	17.30	17.30	8.16	8.16	8.18	31.09	31.09	31.09	97.2	97.4	96.9	7.75	7.76	7.70	3.66	3.61	3.59	6	7.00
	8:05		Middle	3.5	17.30	17.30		8.20	8.20		31.08	31.08		96.5	96.5		7.69	7.61		3.59	3.51		8	
6/3/2017	10:25	Cloudy	Middle	3.5	19.70	19.70	19.80	8.11	8.11	8.11	31.20	31.20	31.21	90.3	89.7	91.0	6.85	6.80	6.89	1.51	1.50	1.49	3	3.00
	10:27		Middle	3.5	19.90	19.90		8.11	8.11		31.22	31.22		91.9	91.9		6.96	6.96		1.48	1.48		3	
8/3/2017	13:30	Fine	Middle	3.5	18.20	18.20	18.20	8.10	8.10	8.16	31.79	31.79	31.80	99.4	99.5	97.8	7.76	7.76	7.63	1.23	1.23	1.23	5	4.50
	13:32		Middle	3.5	18.20	18.20		8.21	8.21		31.80	31.80		96.1	96.0		7.49	7.49		1.24	1.22		4	
11/3/2017	16:40	Cloudy	Middle	3.5	18.60	18.60	18.65	8.16	8.16	8.19	31.72	31.72	31.80	77.7	78.1	77.7	5.99	6.03	6.00	6.58	6.56	6.55	6	6.50
	16:42		Middle	3.5	18.70	18.70		8.22	8.22		31.87	31.87		78.0	77.0		6.02	5.94		6.54	6.52		7	
13/3/2017	4:53	Cloudy	Middle	3.0	19.00	19.00	19.00	7.87	7.87	7.88	31.80	31.80	31.80	79.9	80.1	79.9	6.14	6.15	6.14	4.53	4.51	4.51	3	3.50
	4:54		Middle	3.0	19.00	19.00		7.88	7.88		31.80	31.80		80.0	79.6		6.14	6.11		4.50	4.48		4	
15/3/2017	7:30	Cloudy	Middle	3.5	17.90	17.90	17.90	8.13	8.13	8.13	31.81	31.81	31.81	99.8	99.0	98.3	7.82	7.76	7.70	2.02	2.02	2.02	2	3.00
	7:32		Middle	3.5	17.90	17.90		8.13	8.13		31.81	31.81		97.7	96.6		7.66	7.54		2.02	2.01		4	
17/3/2017	7:30	Fine	Middle	3.5	18.10	18.10	18.15	8.11	8.11	8.13	31.60	31.60	31.60	92.3	92.5	92.3	7.21	7.22	7.20	2.42	2.36	2.37	4	4.50
	7:32		Middle	3.5	18.20	18.20		8.15	8.15		31.59	31.59		92.3	92.1		7.20	7.18		2.35	2.33		5	
20/3/2017	10:00	Fine	Middle	3.0	19.70	19.70	19.80	8.08	8.08	8.10	31.64	31.64	31.64	97.8	97.6	97.3	7.41	7.39	7.37	3.55	3.51	3.57	6	7.00
	10:02		Middle	3.0	19.90	19.90		8.12	8.12		31.63	31.63		97.5	96.4		7.37	7.29		3.60	3.63		8	
22/3/2017	7:45	Cloudy	Middle	3.5	19.00	19.00	19.05	8.06	8.06	8.15	32.24	32.24	32.24	99.2	99.5	99.7	7.59	7.61	7.63	6.48	6.38	6.45	5	4.00
	7:47		Middle	3.5	19.10	19.10		8.23	8.23		32.24	32.24		100.4	99.8		7.68	7.63		6.48	6.45		3	
24/3/2017	10:45	Fine	Middle	3.5	20.00	20.00	20.10	8.17	8.17	8.18	32.28	32.28	32.28	99.3	99.5	99.6	7.45	7.48	7.47	7.71	7.80	7.84	9	8.50
	10:47		Middle	3.5	20.20	20.20		8.19	8.19		32.28	32.28		99.9	99.6		7.48	7.46		7.92	7.91		8	

Remarks:
Single underline denotes exceedance over Action Level.
Double underline denotes exceedance over Limit Level.



**Water Monitoring Result at C7 - Windsor House
Mid-Ebb Tide**

Date	Time	Weather Condition	Sampling Depth		Water Temperature		pH			Salinity		DO Saturation		DO		Turbidity		Suspended Solids						
					°C		-		ppt		%		mg/L		NTU		mg/L							
					Value	Average	Value	Average	Value	Average	Value	Average	Value	Average	Value	Average	Value	Average	Value	Average				
27/2/2017	11:05	Fine	Middle	-	18.20	18.20	18.20	8.16	8.16	8.18	31.14	31.14	31.14	93.6	94.3	94.2	7.32	7.38	7.37	3.71	3.72	3.72	4	3.50
	11:07		Middle	-	18.20	18.20		8.19	8.19		31.13	31.13		94.3	94.4		7.38	7.39		3.72	3.73		3	
1/3/2017	15:15	Fine	Middle	-	19.10	19.10	19.25	8.11	8.11	8.17	31.23	31.23	31.23	98.9	98.9	98.9	7.58	7.58	7.58	2.77	2.77	2.77	2	2.50
	15:17		Middle	-	19.40	19.40		8.22	8.22		31.22	31.22		98.9	98.8		7.58	7.57		2.78	2.76		3	
3/3/2017	16:15	Fine	Middle	-	18.90	18.90	18.95	8.16	8.16	8.19	31.09	31.09	31.09	93.8	94.6	94.5	7.24	7.30	7.29	4.86	4.82	4.83	3	3.50
	16:17		Middle	-	19.00	19.00		8.22	8.22		31.09	31.09		95.0	94.5		7.33	7.29		4.82	4.83		4	
6/3/2017	17:40	Cloudy	Middle	-	19.50	19.60	19.63	7.73	7.73	7.76	31.46	31.46	31.46	82.8	83.1	83.2	6.22	6.31	6.30	5.72	5.68	5.64	5	5.50
	17:41		Middle	-	19.70	19.70		7.79	7.79		31.46	31.46		83.7	83.3		6.36	6.32		5.64	5.53		6	
8/3/2017	20:47	Cloudy	Middle	-	17.60	17.60	17.70	8.05	8.05	8.06	31.97	31.97	31.97	83.3	83.7	83.2	6.65	6.68	6.64	4.30	4.26	4.31	2	2.50
	20:48		Middle	-	17.80	17.80		8.07	8.07		31.97	31.97		83.3	82.3		6.65	6.57		4.32	4.37		3	
11/3/2017	12:34	Cloudy	Middle	-	18.90	18.90	18.90	8.31	8.31	8.31	31.73	31.73	31.74	87.8	80.0	81.0	6.30	6.16	6.12	8.10	7.89	7.91	3	3.50
	12:36		Middle	-	18.90	18.90		8.31	8.31		31.74	31.74		78.6	77.7		6.05	5.98		7.85	7.80		4	
13/3/2017	11:30	Cloudy	Middle	-	20.40	20.40	20.45	8.12	8.12	8.14	31.78	31.78	31.78	90.3	90.8	90.1	6.76	6.79	6.74	3.58	3.58	3.59	3	3.50
	11:32		Middle	-	20.50	20.50		8.15	8.15		31.77	31.77		90.1	89.3		6.74	6.67		3.59	3.59		4	
15/3/2017	15:15	Cloudy	Middle	-	18.70	18.70	18.70	8.34	8.34	8.34	31.75	31.75	31.75	91.1	91.6	91.9	7.04	7.08	7.10	2.50	2.50	2.50	6	5.00
	15:17		Middle	-	18.70	18.70		8.34	8.34		31.75	31.75		92.5	92.5		7.14	7.15		2.50	2.51		4	
17/3/2017	15:40	Fine	Middle	-	19.00	19.00	19.05	8.15	8.15	8.18	31.77	31.77	31.77	96.7	97.0	97.0	7.41	7.45	7.44	2.15	2.11	2.12	3	3.50
	15:42		Middle	-	19.10	19.10		8.20	8.20		31.77	31.77		97.3	97.0		7.46	7.43		2.10	2.10		4	
20/3/2017	18:15	Fine	Middle	-	20.50	20.50	20.70	8.15	8.15	8.17	31.60	31.60	31.59	98.1	97.6	97.1	7.30	7.26	7.22	5.51	5.52	5.59	7	7.00
	18:17		Middle	-	20.90	20.90		8.19	8.19		31.57	31.57		96.8	95.7		7.19	7.11		5.63	5.69		7	
22/3/2017	18:30	Cloudy	Middle	-	19.40	19.40	19.45	7.86	7.86	7.86	32.39	32.39	32.39	83.7	84.3	83.6	6.35	6.39	6.34	7.21	7.23	7.27	7	6.50
	18:31		Middle	-	19.50	19.50		7.86	7.86		32.39	32.39		82.9	83.4		6.29	6.33		7.30	7.32		6	
24/3/2017	20:15	Cloudy	Middle	-	21.20	21.20	21.25	8.00	8.00	8.02	32.48	32.48	32.48	83.2	84.3	83.8	6.10	6.18	6.14	7.46	7.44	7.43	<2	<2
	20:16		Middle	-	21.30	21.30		8.04	8.04		32.48	32.48		84.0	83.5		6.16	6.12		7.42	7.40		<2	

Remarks:
Single underline denotes exceedance over Action Level.
Double underline denotes exceedance over Limit Level.



**Water Monitoring Result at C1 - HKCEC
Mid-Ebb Tide**

Date	Time	Weather Condition	Sampling Depth		Water Temperature		pH			Salinity		DO Saturation		DO		Turbidity		Suspended Solids						
					°C		-		ppt		%		mg/L		NTU		mg/L							
			m	Value	Average	Value	Average	Value	Average	Value	Average	Value	Average	Value	Average	Value	Average	Value	Average					
27/2/2017	14:05	Fine	Middle	2.5	16.60	16.60	16.60	8.12	8.12	8.22	31.18	31.18	31.24	95.6	95.7	95.7	7.70	7.71	7.71	3.78	3.82	3.77	4	4.50
	14:07		Middle	2.5	16.60	16.60		8.31	8.31		31.30	31.30		95.6	96.0		7.70	7.74		3.74	3.73		5	
1/3/2017	14:35	Fine	Middle	2.5	17.80	17.80	17.85	8.27	8.27	8.28	31.31	31.31	31.32	95.8	95.1	95.7	7.54	7.49	7.53	3.86	3.84	3.79	2	2.00
	14:37		Middle	2.5	17.90	17.90		8.28	8.28		31.32	31.32		95.9	95.9		7.55	7.55		3.73	3.73		2	
3/3/2017	15:35	Fine	Middle	3.0	17.70	17.70	17.75	8.30	8.30	8.31	31.34	31.34	31.35	94.0	94.1	94.1	7.41	7.41	7.41	2.45	2.49	2.50	3	3.00
	15:37		Middle	3.0	17.80	17.80		8.31	8.31		31.35	31.35		94.1	94.0		7.41	7.41		2.52	2.53		3	
6/3/2017	18:57	Cloudy	Middle	2.5	18.40	18.40	18.45	7.72	7.72	7.73	31.50	31.50	31.50	85.4	85.7	85.4	6.63	6.65	6.63	4.48	4.42	4.41	3	3.00
	18:58		Middle	2.5	18.50	18.50		7.74	7.74		31.50	31.50		85.2	85.4		6.62	6.63		4.38	4.36		3	
8/3/2017	23:05	Cloudy	Middle	2.5	17.60	17.60	17.60	8.17	8.17	8.17	32.00	32.00	32.00	84.7	85.2	84.7	6.80	6.84	6.80	4.19	4.06	4.08	<2	<u><2</u>
	23:06		Middle	2.5	17.60	17.60		8.17	8.17		32.00	32.00		84.9	84.1		6.80	6.75		4.05	4.00		<2	
11/3/2017	11:58	Cloudy	Middle	2.5	17.90	17.90	17.90	8.37	8.37	8.37	31.97	31.97	32.00	86.4	84.7	84.0	6.76	6.63	6.57	3.49	3.48	3.62	3	3.00
	12:00		Middle	2.5	17.90	17.90		8.37	8.37		32.03	32.03		82.9	81.9		6.49	6.40		3.75	3.76		3	
13/3/2017	14:56	Cloudy	Middle	3.0	19.90	19.90	20.05	8.27	8.27	8.27	43.92	43.94	44.03	88.4	89.9	89.4	6.70	6.75	6.73	4.51	4.46	4.47	6	5.50
	14:58		Middle	3.0	20.20	20.20		8.27	8.27		44.13	44.13		89.6	89.7		6.73	6.74		4.47	4.45		5	
15/3/2017	14:25	Cloudy	Middle	3.0	17.70	17.70	17.70	8.47	8.47	8.47	31.91	31.91	31.91	93.8	94.1	93.9	7.38	7.40	7.39	2.28	2.38	2.35	4	4.50
	14:27		Middle	3.0	17.70	17.70		8.46	8.46		31.90	31.90		94.0	93.7		7.40	7.37		2.38	2.37		5	
17/3/2017	14:40	Fine	Middle	2.5	18.20	18.20	18.25	8.30	8.30	8.31	31.78	31.78	31.80	91.9	91.9	91.6	7.15	7.15	7.13	3.31	3.32	3.31	4	4.00
	14:42		Middle	2.5	18.30	18.30		8.31	8.31		31.81	31.81		91.5	91.1		7.12	7.09		3.31	3.31		4	
20/3/2017	16:40	Fine	Middle	2.5	19.90	19.90	19.95	8.28	8.28	8.28	31.70	31.70	31.70	93.4	93.9	93.5	7.05	7.09	7.06	5.35	5.29	5.31	8	7.00
	16:42		Middle	2.5	20.00	20.00		8.28	8.28		31.69	31.69		93.2	93.6		7.04	7.07		5.29	5.29		6	
22/3/2017	21:05	Cloudy	Middle	3.0	19.10	19.10	19.10	8.02	8.02	8.02	32.42	32.42	32.42	81.9	82.3	82.4	6.25	6.28	6.28	3.37	3.26	3.25	3	2.50
	21:06		Middle	3.0	19.10	19.10		8.02	8.02		32.42	32.42		83.1	82.1		6.34	6.26		3.15	3.20		2	
24/3/2017	22:58	Cloudy	Middle	3.0	21.40	21.40	21.45	8.02	8.02	8.04	32.51	32.51	32.51	84.6	84.1	84.6	6.18	6.14	6.18	4.27	4.12	4.17	3	3.00
	22:59		Middle	3.0	21.50	21.50		8.05	8.05		32.51	32.51		84.5	85.3		6.17	6.23		4.10	4.20		3	

Remarks:
Single underline denotes exceedance over Action Level.
Double underline denotes exceedance over Limit Level.



**Water Monitoring Result at P1 - HKCEC Phase I
Mid-Ebb Tide**

Date	Time	Weather Condition	Sampling Depth		Water Temperature		pH			Salinity		DO Saturation		DO		Turbidity		Suspended Solids						
					°C		-		ppt		%		mg/L		NTU		mg/L							
			m	Value	Average	Value	Average	Value	Average	Value	Average	Value	Average	Value	Average	Value	Average	Value	Average					
27/2/2017	13:45	Fine	Middle	2.5	17.40	17.40	17.50	8.16	8.16	8.20	31.32	31.32	31.32	103.1	102.8	103.8	8.17	8.14	8.11	3.74	3.83	3.81	4	3.50
	13:47		Middle	2.5	17.60	17.60		8.24	8.24		31.31	31.31		107.6	101.8		8.07	8.06		3.83	3.85		3	
1/3/2017	14:15	Fine	Middle	2.5	18.70	18.70	18.85	8.15	8.15	8.18	31.33	31.33	31.33	101.0	100.3	100.4	7.80	7.74	7.75	2.98	2.97	2.95	3	3.00
	14:17		Middle	2.5	19.00	19.00		8.21	8.21		31.32	31.32		100.0	100.1		7.74	7.73		2.93	2.93		3	
3/3/2017	15:15	Fine	Middle	3.0	18.10	18.10	18.20	8.08	8.08	8.15	31.32	31.32	31.32	104.2	107.2	103.4	8.13	7.98	7.96	2.39	2.37	2.36	6	5.00
	15:17		Middle	3.0	18.30	18.30		8.22	8.22		31.31	31.31		101.3	100.7		7.91	7.81		2.35	2.33		4	
6/3/2017	18:30	Cloudy	Middle	2.5	18.40	18.40	18.40	7.91	7.91	7.91	31.49	31.49	31.49	85.6	85.9	85.8	6.56	6.57	6.60	2.88	2.93	2.96	2	2.50
	18:31		Middle	2.5	18.40	18.40		7.91	7.91		31.49	31.49		86.2	85.6		6.70	6.55		2.99	3.02		3	
8/3/2017	22:30	Cloudy	Middle	2.5	17.60	17.60	17.60	8.12	8.12	8.13	32.00	32.00	32.00	84.9	85.4	85.1	6.81	6.85	6.83	4.81	4.79	4.74	<2	2.00
	22:31		Middle	2.5	17.60	17.60		8.13	8.13		32.00	32.00		85.3	84.9		6.83	6.81		4.70	4.67		2	
11/3/2017	11:42	Cloudy	Middle	2.5	17.90	17.90	17.90	8.22	8.22	8.25	32.09	32.09	32.08	80.9	80.4	80.3	6.33	6.30	6.29	4.53	4.53	4.54	5	5.00
	11:44		Middle	2.5	17.90	17.90		8.27	8.27		32.06	32.06		80.3	79.7		6.29	6.24		4.54	4.55		5	
13/3/2017	14:40	Cloudy	Middle	3.0	20.60	20.60	20.95	8.12	8.12	8.16	31.88	31.87	31.83	95.0	94.8	95.3	7.01	6.99	6.83	4.82	4.81	4.82	5	4.00
	14:42		Middle	3.0	21.30	21.30		8.19	8.19		31.79	31.79		94.8	96.6		6.99	6.32		4.82	4.81		3	
15/3/2017	14:05	Cloudy	Middle	3.0	17.80	17.80	17.80	9.03	9.03	9.05	31.83	31.83	31.84	91.6	92.4	92.5	7.20	7.26	7.27	9.87	9.89	9.87	53	52.50
	14:07		Middle	3.0	17.80	17.80		9.07	9.07		31.84	31.84		93.1	92.9		7.31	7.30		9.87	9.84		52	
17/3/2017	14:20	Fine	Middle	2.5	18.70	18.70	18.80	8.16	8.16	8.20	31.82	31.82	31.82	99.6	99.3	99.3	7.67	7.64	7.64	3.31	3.20	3.14	4	3.00
	14:22		Middle	2.5	18.90	18.90		8.24	8.24		31.81	31.81		99.4	98.9		7.64	7.61		3.06	3.00		2	
20/3/2017	16:20	Fine	Middle	2.5	21.60	21.60	21.60	8.09	8.09	8.14	31.81	31.81	31.73	97.6	99.5	98.8	7.19	7.35	7.27	3.58	3.58	3.69	5	4.50
	16:22		Middle	2.5	21.60	21.60		8.18	8.18		31.65	31.65		99.0	99.2		7.26	7.27		3.76	3.85		4	
22/3/2017	20:25	Cloudy	Middle	3.0	19.00	19.00	19.00	8.16	8.16	8.17	32.57	32.57	32.57	84.5	85.2	85.0	6.45	6.51	6.49	4.48	4.52	4.55	5	4.50
	20:26		Middle	3.0	19.00	19.00		8.18	8.18		32.57	32.57		85.4	84.8		6.52	6.48		4.60	4.58		4	
24/3/2017	22:25	Cloudy	Middle	3.0	21.30	21.30	21.35	8.16	8.16	8.17	32.60	32.60	32.60	84.2	85.1	84.6	6.16	6.23	6.19	3.52	3.26	3.35	2	3.00
	22:26		Middle	3.0	21.40	21.40		8.18	8.18		32.60	32.60		84.5	84.6		6.18	6.19		3.33	3.27		4	

Remarks:
Single underline denotes exceedance over Action Level.
Double underline denotes exceedance over Limit Level.



**Water Monitoring Result at P3 - APA
Mid-Ebb Tide**

Date	Time	Weather Condition	Sampling Depth		Water Temperature		pH			Salinity		DO Saturation		DO		Turbidity		Suspended Solids						
					°C		-		ppt		%		mg/L		NTU		mg/L							
			m	Value	Average	Value	Average	Value	Average	Value	Average	Value	Average	Value	Average	Value	Average	Value	Average					
27/2/2017	13:50	Fine	Middle	2.5	16.80	16.80	16.80	8.26	8.26	8.27	31.31	31.31	31.31	98.7	98.6	98.6	7.93	7.92	7.92	3.27	3.24	3.24	6	7.00
	13:52		Middle	2.5	16.80	16.80	16.80	8.27	8.27	8.27	31.31	31.31	31.31	98.5	98.5	98.6	7.91	7.91	7.92	3.24	3.22	3.24	8	
1/3/2017	14:20	Fine	Middle	2.5	17.90	17.90	18.00	8.23	8.23	8.24	31.32	31.32	31.32	97.0	97.6	97.4	7.62	7.66	7.65	3.42	3.40	3.37	3	3.00
	14:22		Middle	2.5	18.10	18.10	18.00	8.25	8.25	8.24	31.32	31.32	31.32	97.6	97.4	97.4	7.66	7.64	7.65	3.35	3.31	3.37	3	
3/3/2017	15:20	Fine	Middle	3.0	17.50	17.50	17.60	8.24	8.24	8.26	31.33	31.33	31.33	96.5	96.5	96.3	7.63	7.63	7.61	3.13	3.03	3.01	4	5.00
	15:22		Middle	3.0	17.70	17.70	17.60	8.27	8.27	8.26	31.32	31.32	31.33	96.1	95.9	96.3	7.59	7.57	7.61	2.98	2.89	3.01	6	
6/3/2017	18:37	Cloudy	Middle	2.5	18.40	18.40	18.45	7.81	7.81	7.82	31.50	31.50	31.50	85.7	85.9	85.8	6.66	6.67	6.64	2.68	2.52	2.54	3	3.00
	18:38		Middle	2.5	18.50	18.50	18.45	7.82	7.82	7.82	31.50	31.50	31.50	85.6	85.9	85.8	6.64	6.57	6.64	2.50	2.45	2.54	3	
8/3/2017	22:37	Cloudy	Middle	2.5	17.50	17.50	17.55	8.20	8.20	8.20	31.99	31.99	31.99	84.5	84.0	83.9	6.78	6.76	6.74	3.21	3.34	3.22	<2	3.00
	22:38		Middle	2.5	17.60	17.60	17.55	8.20	8.20	8.20	31.99	31.99	31.99	83.5	83.6	83.9	6.71	6.72	6.74	3.12	3.19	3.22	3	
11/3/2017	11:46	Cloudy	Middle	2.5	17.90	17.90	17.85	8.31	8.31	8.32	31.84	31.84	31.95	87.2	85.8	84.7	6.84	6.72	6.64	4.83	4.68	4.75	6	6.00
	11:48		Middle	2.5	17.80	17.80	17.85	8.32	8.32	8.32	32.06	32.06	31.95	83.6	82.1	84.7	6.56	6.43	6.64	4.66	4.81	4.75	6	
13/3/2017	14:44	Cloudy	Middle	3.0	19.80	19.80	20.05	8.22	8.22	8.24	31.80	31.80	38.00	91.3	91.0	91.1	6.90	6.82	6.87	4.61	4.54	4.58	4	4.00
	14:46		Middle	3.0	20.30	20.30	20.05	8.25	8.25	8.24	44.19	44.19	38.00	91.2	90.9	91.1	6.90	6.86	6.87	4.62	4.53	4.58	4	
15/3/2017	14:10	Cloudy	Middle	3.0	17.50	17.50	17.55	8.84	8.82	8.76	31.89	31.89	31.89	93.9	92.9	93.3	7.41	7.34	7.36	1.74	1.81	1.80	10	9.00
	14:12		Middle	3.0	17.60	17.60	17.55	8.68	8.68	8.76	31.89	31.89	31.89	93.2	93.0	93.3	7.35	7.34	7.36	1.82	1.83	1.80	8	
17/3/2017	14:25	Fine	Middle	2.5	18.40	18.40	18.45	8.26	8.26	8.27	31.74	31.74	31.77	96.4	96.7	96.7	7.48	7.50	7.50	2.00	2.02	2.00	8	7.00
	14:27		Middle	2.5	18.50	18.50	18.45	8.27	8.27	8.27	31.79	31.79	31.77	96.8	96.7	96.7	7.50	7.50	7.50	1.99	1.98	2.00	6	
20/3/2017	16:25	Fine	Middle	2.5	20.30	20.30	20.45	8.21	8.21	8.23	31.68	31.65	31.68	97.2	97.6	97.8	7.27	7.30	7.31	3.03	3.04	3.04	4	4.00
	16:27		Middle	2.5	20.60	20.60	20.45	8.24	8.24	8.23	31.69	31.69	31.68	98.2	98.0	97.8	7.33	7.32	7.31	3.03	3.04	3.04	4	
22/3/2017	20:32	Cloudy	Middle	3.0	18.80	18.80	18.80	8.22	8.22	8.22	32.56	32.56	32.56	80.1	81.9	81.5	6.16	6.28	6.26	4.11	4.13	4.11	<2	3.00
	20:33		Middle	3.0	18.80	18.80	18.80	8.22	8.22	8.22	32.56	32.56	32.56	82.1	81.8	81.5	6.30	6.28	6.26	4.10	4.08	4.11	3	
24/3/2017	22:33	Cloudy	Middle	3.0	21.30	21.30	21.30	8.20	8.20	8.21	32.58	32.58	32.58	84.6	84.7	83.9	6.19	6.20	6.14	3.63	3.67	3.63	5	4.50
	22:34		Middle	3.0	21.30	21.30	21.30	8.21	8.21	8.21	32.58	32.58	32.58	83.7	82.5	83.9	6.13	6.04	6.14	3.65	3.56	3.63	4	

Remarks:
Single underline denotes exceedance over Action Level.
Double underline denotes exceedance over Limit Level.



**Water Monitoring Result at P4 - SOC
Mid-Ebb Tide**

Date	Time	Weather Condition	Sampling Depth		Water Temperature		pH			Salinity		DO Saturation		DO		Turbidity		Suspended Solids						
					°C		-		ppt		%		mg/L		NTU		mg/L							
					Value	Average	Value	Average	Value	Average	Value	Average	Value	Average	Value	Average	Value	Average						
27/2/2017	13:55	Fine	Middle	2.5	16.50	16.50	16.50	8.28	8.28	8.29	31.27	31.27	31.29	96.7	96.7	96.6	7.81	7.81	7.80	3.23	3.19	3.20	3	3.00
	13:57		Middle	2.5	16.50	16.50	16.50	8.29	8.29	8.29	31.30	31.30	31.30	96.6	96.4	96.6	7.80	7.79	7.80	3.19	3.18	3.20	3	3.00
1/3/2017	14:25	Fine	Middle	2.5	17.80	17.80	17.85	8.25	8.25	8.26	31.31	31.31	31.31	95.7	95.8	95.8	7.53	7.54	7.54	3.29	3.24	3.28	4	3.50
	14:27		Middle	2.5	17.90	17.90	17.85	8.26	8.26	8.26	31.31	31.31	31.31	96.0	95.7	95.8	7.55	7.53	7.54	3.30	3.30	3.28	3	3.50
3/3/2017	15:25	Fine	Middle	3.0	17.60	17.60	17.65	8.27	8.27	8.28	31.31	31.31	31.33	95.5	95.8	95.6	7.55	7.57	7.55	2.50	2.47	2.46	4	3.50
	15:27		Middle	3.0	17.70	17.70	17.65	8.28	8.28	8.28	31.34	31.34	31.33	95.8	95.2	95.6	7.57	7.52	7.55	2.44	2.43	2.46	3	3.50
6/3/2017	18:47	Cloudy	Middle	2.5	18.30	18.30	18.35	7.87	7.87	7.88	31.48	31.48	31.48	84.4	83.9	83.9	6.57	6.51	6.52	2.82	2.74	2.86	3	3.00
	18:48		Middle	2.5	18.40	18.40	18.35	7.88	7.88	7.88	31.48	31.48	31.48	83.6	83.6	83.9	6.49	6.50	6.52	2.86	3.02	2.86	3	3.00
8/3/2017	22:46	Cloudy	Middle	2.5	17.40	17.40	17.45	8.22	8.22	8.22	31.99	31.99	31.99	84.9	85.6	84.2	6.83	6.09	6.58	2.71	2.67	2.63	<2	<2
	22:47		Middle	2.5	17.50	17.50	17.45	8.22	8.22	8.22	31.99	31.99	31.99	83.3	83.1	84.2	6.70	6.69	6.58	2.63	2.49	2.63	<2	<2
11/3/2017	11:50	Cloudy	Middle	2.5	17.90	17.90	17.90	8.34	8.34	8.35	31.80	31.80	31.92	83.8	82.4	82.3	6.56	6.45	6.44	5.04	5.14	5.09	5	5.00
	11:52		Middle	2.5	17.90	17.90	17.90	8.35	8.35	8.35	32.04	32.04	31.92	81.6	81.3	82.3	6.39	6.36	6.44	5.22	4.96	5.09	5	5.00
13/3/2017	14:48	Cloudy	Middle	3.0	19.80	19.80	20.05	8.25	8.25	8.26	43.85	43.89	37.82	90.1	92.2	91.1	6.90	6.95	6.87	5.22	5.15	5.17	5	6.00
	14:50		Middle	3.0	20.30	20.30	20.05	8.26	8.26	8.26	31.77	31.77	37.82	91.1	91.0	91.1	6.82	6.80	6.87	5.19	5.10	5.17	7	6.00
15/3/2017	14:15	Cloudy	Middle	3.0	17.40	17.40	17.50	8.60	8.60	8.58	31.90	31.90	31.90	92.7	93.2	93.2	7.32	7.36	7.37	1.76	1.80	1.79	6	5.50
	14:17		Middle	3.0	17.60	17.60	17.50	8.55	8.55	8.58	31.90	31.90	31.90	93.5	93.5	93.2	7.39	7.39	7.37	1.81	1.78	1.79	5	5.50
17/3/2017	14:30	Fine	Middle	2.5	18.30	18.30	18.35	8.28	8.28	8.29	31.78	31.78	31.79	95.3	95.4	95.3	7.41	7.41	7.40	1.93	1.96	1.88	6	5.00
	14:32		Middle	2.5	18.40	18.40	18.35	8.29	8.29	8.29	31.80	31.80	31.79	95.4	95.0	95.3	7.41	7.38	7.40	1.87	1.75	1.88	4	5.00
20/3/2017	16:30	Fine	Middle	2.5	20.30	20.30	20.40	8.25	8.25	8.26	31.68	31.68	31.69	91.9	95.8	95.1	6.89	7.17	7.12	5.57	5.56	5.64	5	5.00
	16:32		Middle	2.5	20.50	20.50	20.40	8.26	8.26	8.26	31.69	31.69	31.69	96.7	95.8	95.1	7.23	7.17	7.12	5.69	5.74	5.64	5	5.00
22/3/2017	20:42	Cloudy	Middle	3.0	18.80	18.80	18.80	8.24	8.24	8.24	32.56	32.56	32.56	80.4	80.5	81.0	6.16	6.17	6.21	4.37	4.35	4.38	4	3.50
	20:43		Middle	3.0	18.80	18.80	18.80	8.24	8.24	8.24	32.56	32.56	32.56	81.1	82.0	81.0	6.22	6.29	6.21	4.29	4.50	4.38	3	3.50
24/3/2017	22:41	Cloudy	Middle	3.0	21.40	21.40	21.40	8.23	8.23	8.23	32.58	32.58	32.58	81.4	82.7	82.8	5.95	6.05	6.05	6.81	6.63	6.66	2	2.00
	22:42		Middle	3.0	21.40	21.40	21.40	8.23	8.23	8.23	32.58	32.58	32.58	83.6	83.5	82.8	6.11	6.10	6.05	6.60	6.58	6.66	2	2.00

Remarks:
Single underline denotes exceedance over Action Level.
Double underline denotes exceedance over Limit Level.



**Water Monitoring Result at P5 - WCT / RT / IT
Mid-Ebb Tide**

Date	Time	Weather Condition	Sampling Depth		Water Temperature		pH			Salinity		DO Saturation		DO		Turbidity		Suspended Solids						
					°C		-		ppt		%		mg/L		NTU		mg/L							
			m	Value	Average	Value	Average	Value	Average	Value	Average	Value	Average	Value	Average	Value	Average	Value	Average					
27/2/2017	14:00	Fine	Middle	2.5	16.60	16.60	16.60	8.29	8.29	8.30	31.25	31.25	31.26	97.3	97.3	97.2	7.85	7.85	7.85	3.84	3.84	3.84	5	4.50
	14:02		Middle	2.5	16.60	16.60	16.60	8.30	8.30	8.30	31.27	31.27	31.26	97.2	97.1	97.2	7.84	7.84	7.85	3.84	3.83	3.84	4	4.50
1/3/2017	14:30	Fine	Middle	2.5	17.80	17.80	17.85	8.26	8.26	8.27	31.29	31.29	31.30	95.1	94.9	94.8	7.48	7.47	7.46	3.35	3.25	3.26	5	4.50
	14:32		Middle	2.5	17.90	17.90	17.85	8.27	8.27	8.27	31.31	31.31	31.30	94.8	94.5	94.8	7.46	7.43	7.46	3.21	3.22	3.26	4	4.50
3/3/2017	15:30	Fine	Middle	3.0	17.70	17.70	17.75	8.29	8.29	8.30	31.32	31.32	31.31	95.6	95.8	95.6	7.54	7.56	7.54	2.80	2.99	2.95	3	3.00
	15:32		Middle	3.0	17.80	17.80	17.75	8.30	8.30	8.30	31.30	31.30	31.31	95.8	95.1	95.6	7.55	7.50	7.54	3.00	3.01	2.95	3	3.00
6/3/2017	18:52	Cloudy	Middle	2.5	18.40	18.40	18.50	7.79	7.79	7.80	31.50	31.50	31.51	84.9	83.9	84.7	6.59	6.49	6.56	3.79	3.30	3.46	3	3.00
	18:53		Middle	2.5	18.60	18.60	18.50	7.80	7.80	7.80	31.51	31.51	31.51	84.6	85.3	84.7	6.55	6.61	6.56	3.36	3.38	3.46	3	3.00
8/3/2017	22:55	Cloudy	Middle	2.5	17.60	17.60	17.60	7.98	7.98	7.99	31.94	31.94	31.94	83.9	84.0	83.7	6.74	6.74	6.72	3.93	3.64	3.68	<2	<2
	22:56		Middle	2.5	17.60	17.60	17.60	8.01	7.99	7.99	31.94	31.94	31.94	83.4	83.5	83.7	6.69	6.70	6.72	3.59	3.56	3.68	<2	<2
11/3/2017	11:54	Cloudy	Middle	2.5	17.90	17.90	17.90	8.36	8.36	8.36	32.02	32.02	32.03	83.7	82.4	81.9	6.55	6.45	6.41	4.02	3.80	4.02	3	3.00
	11:56		Middle	2.5	17.90	17.90	17.90	8.36	8.36	8.36	32.03	32.03	32.03	80.9	80.5	81.9	6.33	6.30	6.41	4.11	4.16	4.02	3	3.00
13/3/2017	14:52	Cloudy	Middle	3.0	19.70	19.70	19.80	8.27	8.27	8.27	43.74	43.74	43.81	90.5	89.9	90.8	6.86	6.76	6.84	5.27	5.33	5.29	5	5.00
	14:54		Middle	3.0	19.90	19.90	19.80	8.27	8.27	8.27	43.88	43.88	43.81	91.7	90.9	90.8	6.89	6.86	6.84	5.25	5.31	5.29	5	5.00
15/3/2017	14:20	Cloudy	Middle	3.0	17.60	17.60	17.65	8.50	8.50	8.49	31.91	31.91	31.91	94.5	94.7	94.8	7.45	7.46	7.47	1.63	1.65	1.65	5	4.50
	14:22		Middle	3.0	17.70	17.70	17.65	8.48	8.48	8.49	31.91	31.91	31.91	94.9	95.0	94.8	7.48	7.48	7.47	1.66	1.66	1.65	4	4.50
17/3/2017	14:35	Fine	Middle	2.5	18.30	18.30	18.35	8.29	8.29	8.30	31.78	31.78	31.79	94.2	94.0	93.8	7.33	7.31	7.30	1.90	1.87	1.87	4	4.00
	14:37		Middle	2.5	18.40	18.40	18.35	8.30	8.30	8.30	31.80	31.80	31.79	93.7	93.4	93.8	7.28	7.26	7.30	1.85	1.84	1.87	4	4.00
20/3/2017	16:35	Fine	Middle	2.5	20.20	20.20	20.25	8.27	8.27	8.27	31.69	31.69	31.69	94.9	95.6	95.5	7.13	7.18	7.17	3.94	3.93	3.95	4	4.00
	16:37		Middle	2.5	20.30	20.30	20.25	8.27	8.27	8.27	31.68	31.68	31.69	96.1	95.3	95.5	7.21	7.15	7.17	3.97	3.97	3.95	4	4.00
22/3/2017	20:51	Cloudy	Middle	3.0	19.20	19.20	19.20	8.26	8.26	8.26	32.54	32.54	32.54	81.6	81.3	81.1	6.22	6.19	6.16	4.71	4.73	4.65	3	2.50
	20:25		Middle	3.0	19.20	19.20	19.20	8.25	8.26	8.26	32.54	32.54	32.54	80.9	80.6	81.1	6.10	6.14	6.16	4.61	4.55	4.65	2	2.50
24/3/2017	22:50	Cloudy	Middle	3.0	21.30	21.30	21.30	8.24	8.24	8.24	32.60	32.60	32.60	82.0	80.7	81.4	6.00	5.91	5.96	4.84	4.98	4.96	5	4.50
	22:51		Middle	3.0	21.30	21.30	21.30	8.24	8.24	8.24	32.60	32.60	32.60	81.7	81.3	81.4	5.98	5.95	5.96	4.99	5.02	4.96	4	4.50

Remarks:
Single underline denotes exceedance over Action Level.
Double underline denotes exceedance over Limit Level.



**Water Monitoring Result at RW21-P789 - GEC / CRB / SHK
Mid-Ebb Tide**

Date	Time	Weather Condition	Sampling Depth		Water Temperature		pH			Salinity		DO Saturation		DO		Turbidity		Suspended Solids						
					°C		-		ppt		%		mg/L		NTU		mg/L							
			m	Value	Average	Value	Average	Value	Average	Value	Average	Value	Average	Value	Average	Value	Average	Value	Average					
27/2/2017	14:20	Fine	Middle	3.5	17.40	17.40	17.45	8.24	8.24	8.25	31.27	31.27	31.27	99.6	99.2	98.9	7.91	7.87	7.85	2.63	7.71	3.96	2	2.00
	14:22		Middle	3.5	17.50	17.50		8.28	8.25		31.26	31.26		98.6	98.1		7.83	7.78		2.73	2.75		2	
1/3/2017	14:50	Fine	Middle	3.5	18.20	18.20	18.25	8.22	8.22	8.24	31.28	31.28	31.28	95.4	96.3	96.1	7.45	7.52	7.52	2.57	2.58	2.56	4	4.00
	14:52		Middle	3.5	18.30	18.30		8.26	8.26		31.28	31.28		96.3	96.4		7.57	7.52		2.56	2.52		4	
3/3/2017	15:46	Fine	Middle	3.5	18.20	18.20	18.25	8.23	8.23	8.25	31.31	31.31	31.31	95.4	95.2	94.9	7.45	7.43	7.41	2.07	2.06	2.04	2	2.50
	15:47		Middle	3.5	18.30	18.30		8.27	8.27		31.31	31.31		94.8	94.1		7.40	7.34		2.02	2.00		3	
6/3/2017	18:10	Cloudy	Middle	4.0	19.10	19.10	19.10	8.05	8.05	8.05	31.39	31.39	31.39	82.2	81.9	82.0	6.31	6.29	6.30	3.58	3.59	3.56	2	2.50
	18:11		Middle	4.0	19.10	19.10		8.05	8.05		31.39	31.39		81.8	82.1		6.28	6.30		3.65	3.43		3	
8/3/2017	21:10	Cloudy	Middle	3.5	17.50	17.50	17.55	8.07	8.07	8.09	32.09	32.09	32.09	83.5	83.8	84.7	6.58	6.60	6.67	3.23	3.22	3.21	<2	<2
	21:11		Middle	3.5	17.60	17.60		8.10	8.10		32.09	32.09		85.8	85.6		6.75	6.74		3.18	3.20		<2	
11/3/2017	12:09	Cloudy	Middle	3.5	18.10	18.10	18.10	8.27	8.27	8.30	32.03	32.03	32.03	88.7	87.1	86.5	6.92	6.79	6.75	3.75	3.77	3.77	3	3.50
	12:11		Middle	3.5	18.10	18.10		8.32	8.32		32.03	32.03		85.5	84.8		6.67	6.62		3.78	3.77		4	
13/3/2017	15:10	Cloudy	Middle	3.5	19.80	19.80	19.95	8.22	8.22	8.25	31.69	31.68	31.68	87.7	87.7	85.3	6.61	6.25	6.33	3.84	3.85	3.86	3	4.00
	15:12		Middle	3.5	20.10	20.10		8.27	8.27		31.68	31.68		82.3	83.3		6.18	6.28		3.88	3.86		5	
15/3/2017	14:50	Cloudy	Middle	3.5	18.00	18.00	18.00	8.37	8.38	8.38	31.88	31.88	31.88	95.7	96.1	95.8	7.49	7.52	7.50	1.42	1.42	1.42	14	13.00
	14:52		Middle	3.5	18.00	18.00		8.39	8.39		31.88	31.88		95.8	95.7		7.50	7.49		1.42	1.42		12	
17/3/2017	14:50	Fine	Middle	3.0	18.40	18.40	18.45	8.22	8.22	8.25	31.79	31.79	31.80	98.4	96.2	96.4	7.61	7.45	7.47	1.83	1.77	1.79	3	3.50
	14:52		Middle	3.0	18.50	18.50		8.28	8.28		31.80	31.80		95.8	95.3		7.42	7.39		1.77	1.78		4	
20/3/2017	16:50	Fine	Middle	3.5	19.70	19.70	19.80	8.19	8.19	8.22	31.61	31.61	31.59	95.4	94.1	93.9	7.21	7.11	7.09	5.04	5.09	5.04	3	4.00
	16:52		Middle	3.5	19.90	19.90		8.24	8.24		31.59	31.56		93.0	93.0		7.01	7.01		5.01	5.00		5	
22/3/2017	18:55	Cloudy	Middle	4.0	18.90	18.90	18.95	7.96	7.96	7.98	32.47	32.47	32.47	86.9	87.0	86.5	6.65	6.65	6.61	3.72	3.91	3.87	4	3.50
	18:56		Middle	4.0	19.00	19.00		8.00	7.99		32.47	32.47		86.3	85.7		6.60	6.55		3.99	3.84		3	
24/3/2017	20:48	Cloudy	Middle	4.0	21.30	21.30	21.35	8.14	8.14	8.16	32.70	32.70	32.70	84.1	84.8	85.4	6.15	6.21	6.25	5.66	5.64	5.63	3	3.00
	20:49		Middle	4.0	21.40	21.40		8.18	8.18		32.70	32.70		86.0	86.5		6.29	6.33		5.60	5.62		3	

Remarks:
Single underline denotes exceedance over Action Level.
Double underline denotes exceedance over Limit Level.



**Water Monitoring Result at WSD19 - Sheung Wan
Mid-Ebb Tide**

Date	Time	Weather Condition	Sampling Depth		Water Temperature		pH			Salinity		DO Saturation		DO		Turbidity		Suspended Solids						
			m		°C		-		ppt		%		mg/L		NTU		mg/L							
					Value	Average	Value	Average	Value	Average	Value	Average	Value	Average	Value	Average	Value	Average						
27/2/2017	13:05	Fine	Middle	3.5	17.80	17.80	17.90	8.13	8.13	8.16	31.25	31.25	31.25	99.4	99.4	98.7	7.81	7.81	7.73	6.17	6.17	6.11	6	6.50
	13:07		Middle	3.5	18.00	18.00		8.18	8.18		31.25	31.25		98.4	97.7		7.68	7.63		6.08	6.00		7	
1/3/2017	13:30	Fine	Middle	3.5	18.50	18.50	18.70	8.21	8.21	8.22	31.24	31.24	31.24	101.4	100.2	99.9	7.84	7.74	7.72	5.14	5.29	5.26	7	7.50
	13:32		Middle	3.5	18.90	18.90		8.22	8.22		31.23	31.23		99.5	98.4		7.69	7.59		5.31	5.30		8	
3/3/2017	14:25	Fine	Middle	3.5	18.30	18.30	18.45	8.14	8.14	8.17	31.23	31.23	31.22	99.6	99.5	99.2	7.75	7.74	7.71	5.01	5.01	5.00	7	6.50
	14:27		Middle	3.5	18.60	18.60		8.19	8.19		31.21	31.21		99.1	98.4		7.70	7.64		4.95	5.01		6	
6/3/2017	19:35	Cloudy	Middle	3.0	18.20	18.20	18.20	7.93	7.93	7.94	31.39	31.39	31.39	84.1	84.0	84.1	6.56	6.55	6.56	5.42	5.40	5.39	4	4.50
	19:36		Middle	3.0	18.20	18.20		7.94	7.94		31.39	31.39		84.3	84.0		6.58	6.55		5.38	5.36		5	
8/3/2017	21:30	Cloudy	Middle	3.5	17.70	17.70	17.70	7.88	7.88	7.91	32.17	32.17	32.17	83.6	84.8	84.0	6.57	6.65	6.60	5.92	5.64	5.68	6	5.50
	21:31		Middle	3.5	17.70	17.70		7.93	7.93		32.17	32.18		84.2	83.2		6.62	6.54		5.62	5.52		5	
11/3/2017	10:57	Cloudy	Middle	3.5	18.00	18.00	18.00	8.14	8.14	8.16	31.90	31.90	31.90	81.5	81.5	81.5	6.37	6.37	5.62	4.99	5.05	5.03	3	3.00
	10:59		Middle	3.5	18.00	18.00		8.18	8.18		31.89	31.89		81.9	81.2		6.40	6.34		5.05	5.02		3	
13/3/2017	13:35	Cloudy	Middle	3.5	20.40	20.40	20.65	8.12	8.12	8.14	31.74	31.74	31.73	91.3	89.7	89.8	6.79	6.67	6.68	3.44	3.37	3.34	24	<u>23.50</u>
	13:37		Middle	3.5	20.90	20.90		8.16	8.16		31.72	31.72		88.9	89.4		6.61	6.64		3.31	3.25		23	
15/3/2017	13:25	Cloudy	Middle	3.5	18.00	18.00	18.00	8.19	8.19	8.21	31.76	31.76	31.76	97.5	96.7	96.3	7.63	7.57	7.54	3.60	3.58	3.56	7	7.00
	13:27		Middle	3.5	18.00	18.00		8.22	8.22		31.76	31.76		95.8	95.0		7.50	7.44		3.56	3.48		7	
17/3/2017	13:45	Fine	Middle	3.0	18.80	18.80	18.90	8.18	8.18	8.20	31.74	31.74	31.74	95.8	94.8	95.2	7.37	7.29	7.32	3.16	3.18	3.17	5	5.00
	13:47		Middle	3.0	19.00	19.00		8.21	8.21		31.73	31.73		95.1	95.0		7.31	7.30		3.20	3.12		5	
20/3/2017	15:15	Fine	Middle	3.5	21.20	21.20	21.55	8.21	8.21	8.21	31.67	31.67	31.67	101.3	101.8	100.6	7.42	7.44	7.35	3.65	3.56	3.62	7	7.00
	15:17		Middle	3.5	21.90	21.90		8.20	8.20		31.66	31.66		99.7	99.6		7.28	7.27		3.62	3.63		7	
22/3/2017	19:31	Cloudy	Middle	4.0	19.00	19.00	19.00	8.02	8.02	8.05	32.14	32.14	32.15	81.4	81.4	81.5	6.23	6.27	6.25	3.60	3.69	3.62	3	4.50
	19:32		Middle	4.0	19.00	19.00		8.07	8.07		32.15	32.15		81.7	81.6		6.25	6.25		3.63	3.55		6	
24/3/2017	21:45	Cloudy	Middle	4.0	21.40	21.40	21.40	7.80	7.80	7.80	32.44	32.44	32.44	81.6	83.6	82.9	5.99	6.11	6.07	7.95	7.83	7.89	4	4.00
	21:46		Middle	4.0	21.40	21.40		7.80	7.80		32.44	32.44		83.3	82.9		6.09	6.07		7.90	7.86		4	

Remarks:
Single underline denotes exceedance over Action Level.
Double underline denotes exceedance over Limit Level.



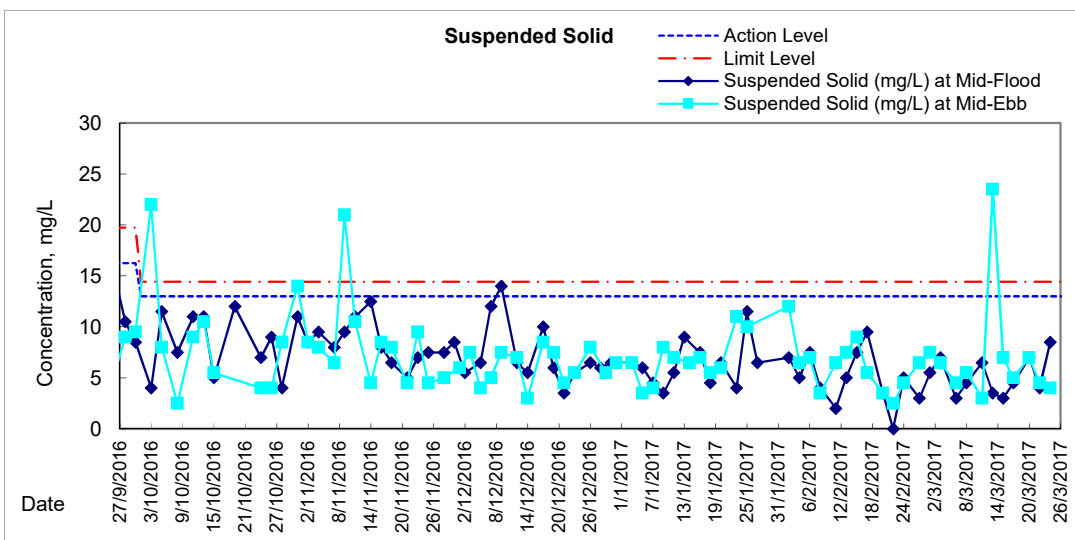
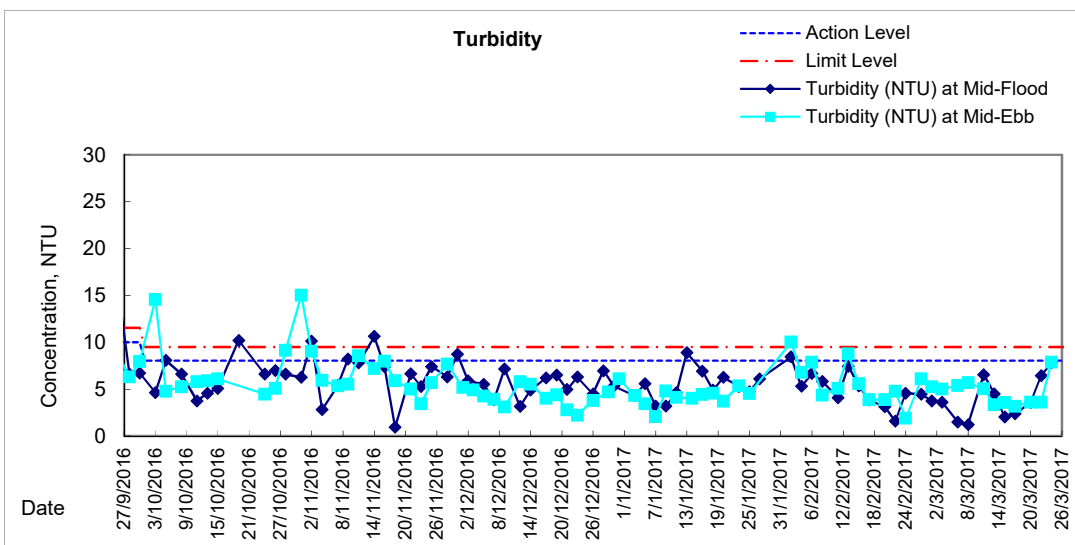
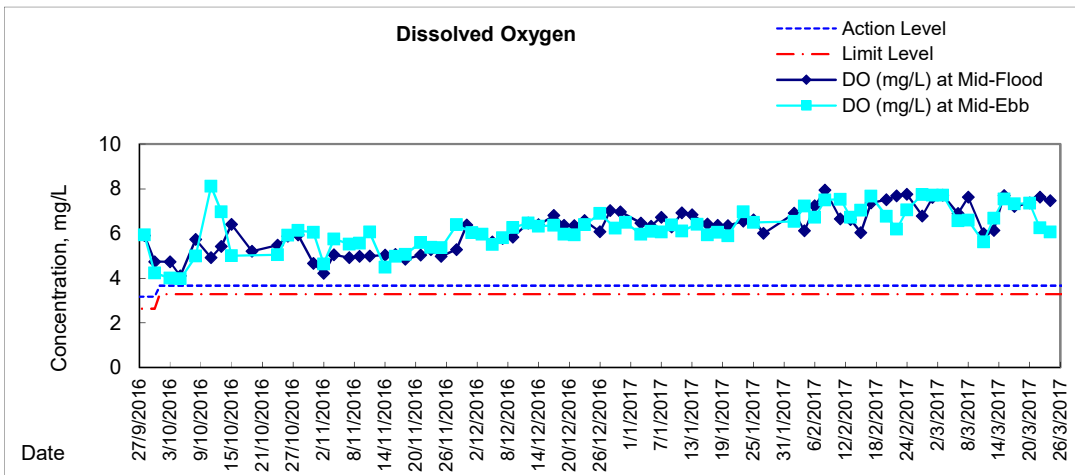
**Water Monitoring Result at P1 - HKCEC Phase I
Additional Monitoring**

Date	Time	Weater Condition	Sampling Depth		Water Temperature			pH		Salinity			DO Saturation		DO		Turbidity		Suspended Solids					
					°C			-		ppt			%		mg/L		NTU		mg/L					
			m		Value	Average	Value	Average	Value	Average	Value	Average	Value	Average	Value	Average	Value	Average	Value	Average				
16/3/2017	14:00	Fine	Middle	3.0	18.50	18.50	18.50	8.22	8.22	8.24	31.93	31.93	31.93	96.4	96.7	95.8	7.47	7.49	7.42	1.60	1.60	1.61	-	-
	14:02		Middle	3.0	18.50	18.50		8.25	8.25		31.93	31.93		95.2	95.0		7.37	7.35		1.61	1.63		-	-

Remarks:
 Single underline denotes exceedance over Action Level.
 Double underline denotes exceedance over Limit Level.

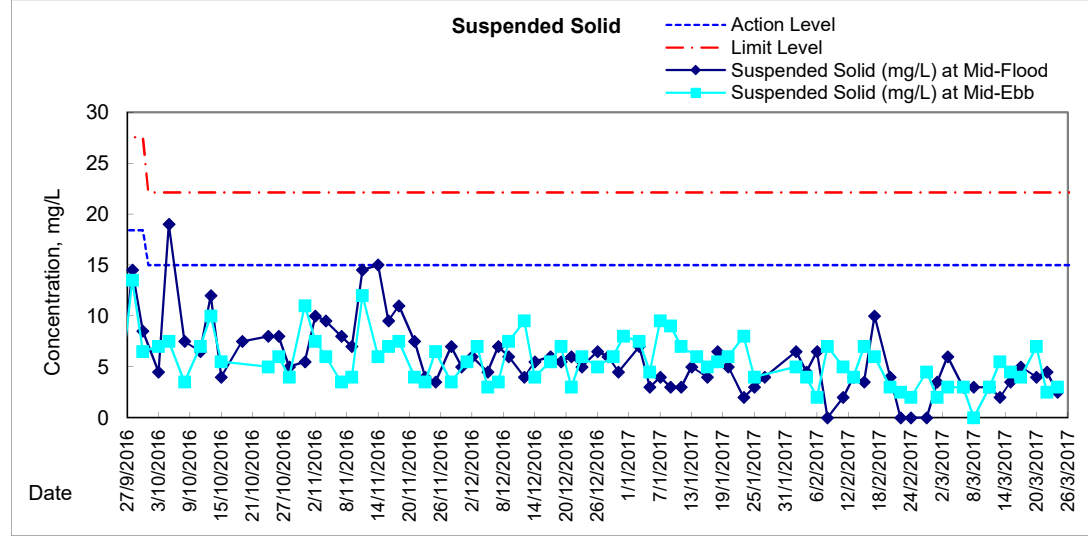
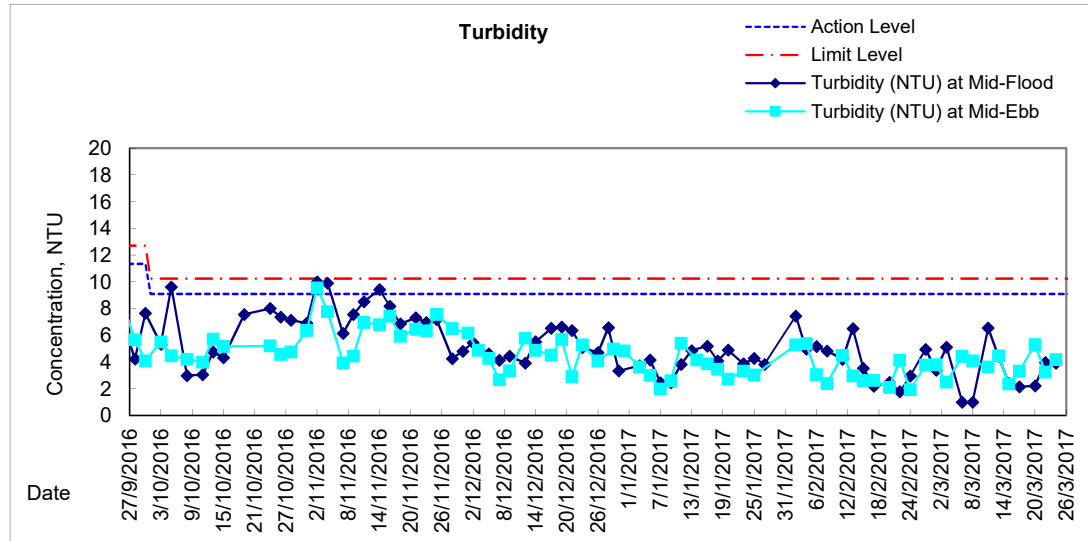
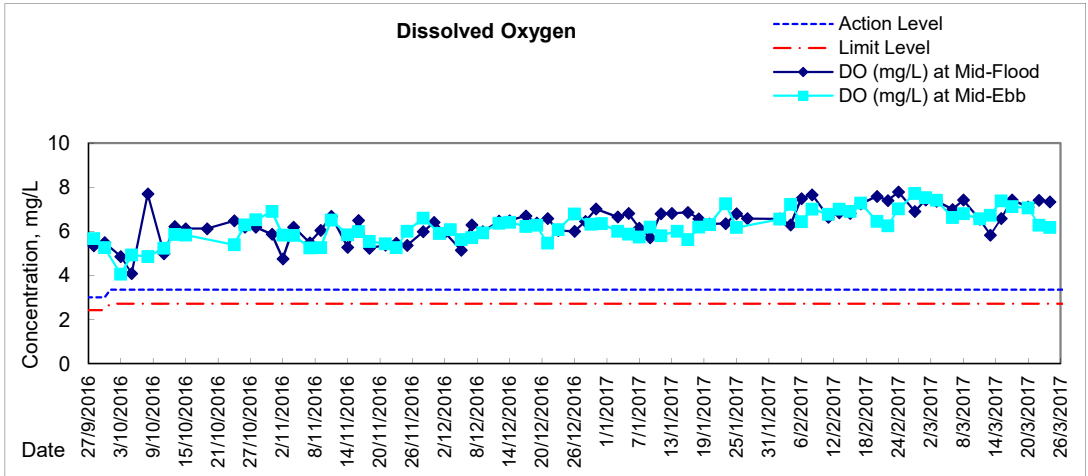


Graphic Presentation of Water Quality Result of WSD19 - Sheung Wan



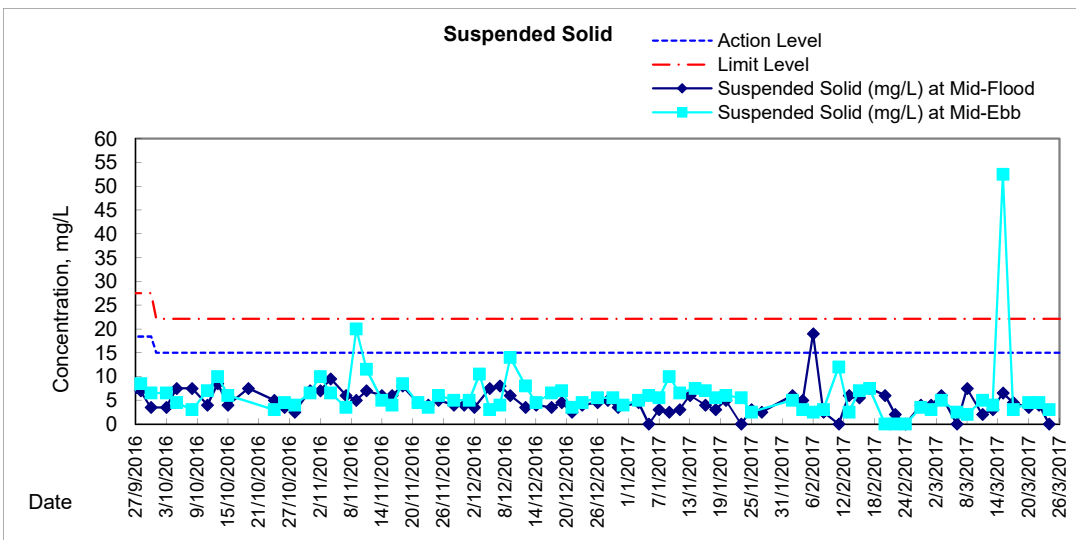
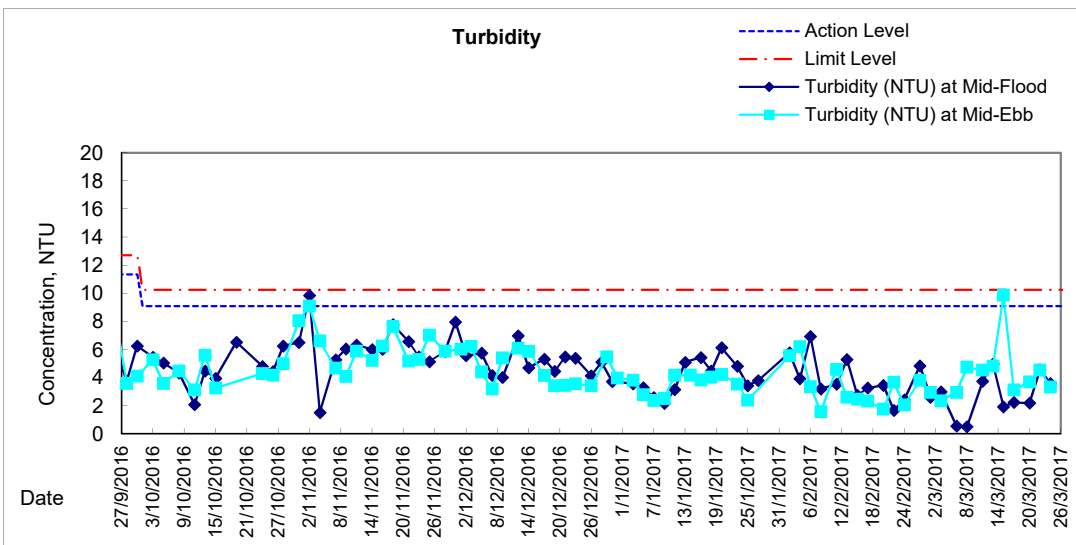
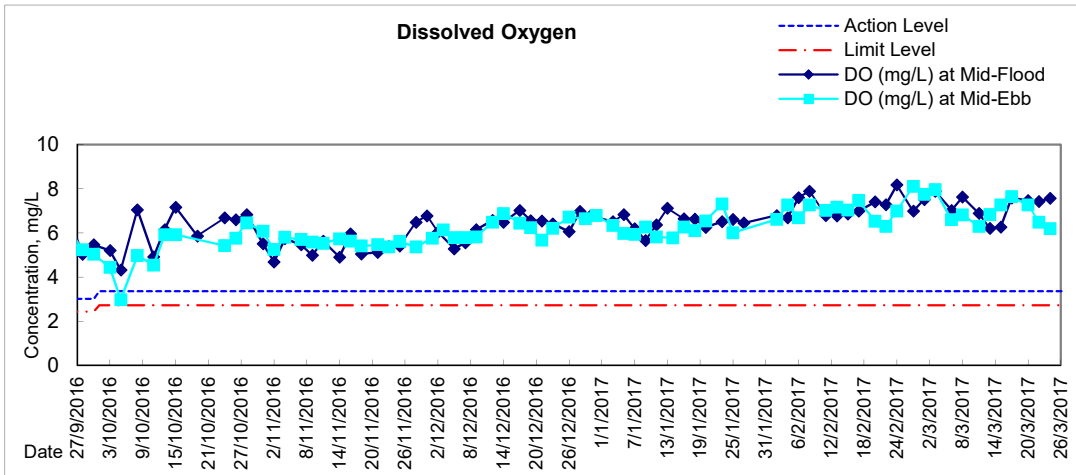


Graphic Presentation of Water Quality Result of C1 - HKCEC



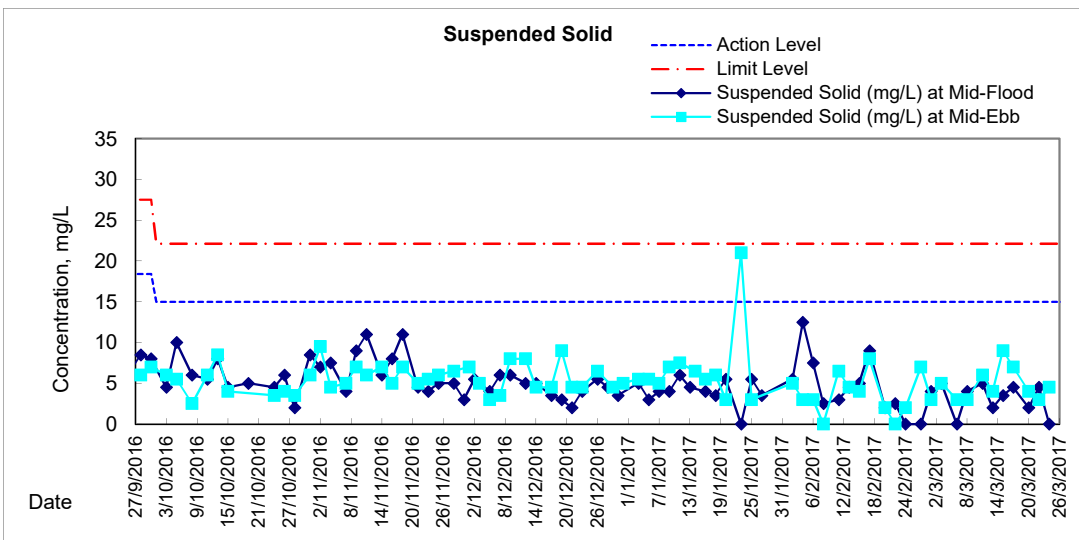
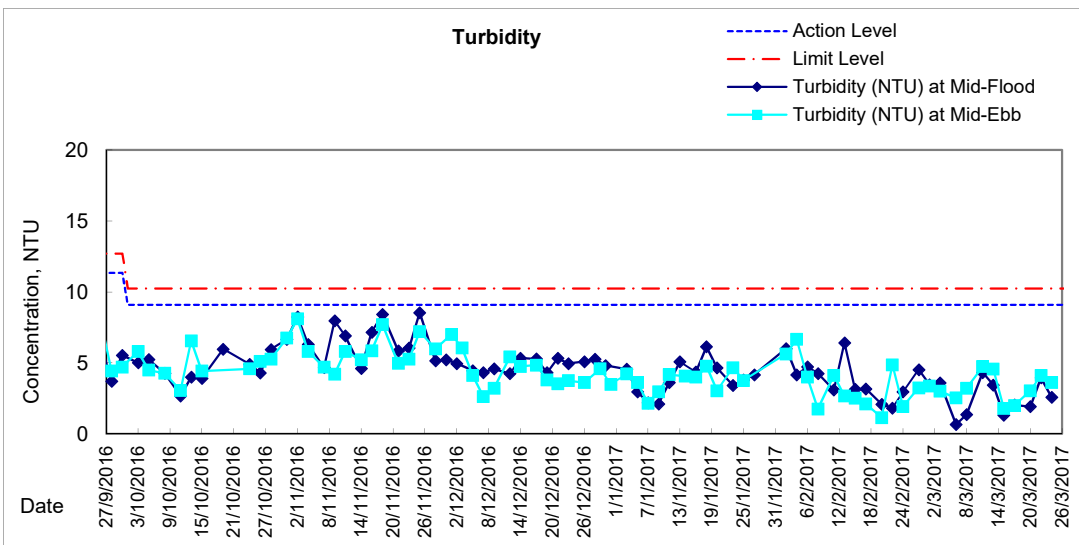
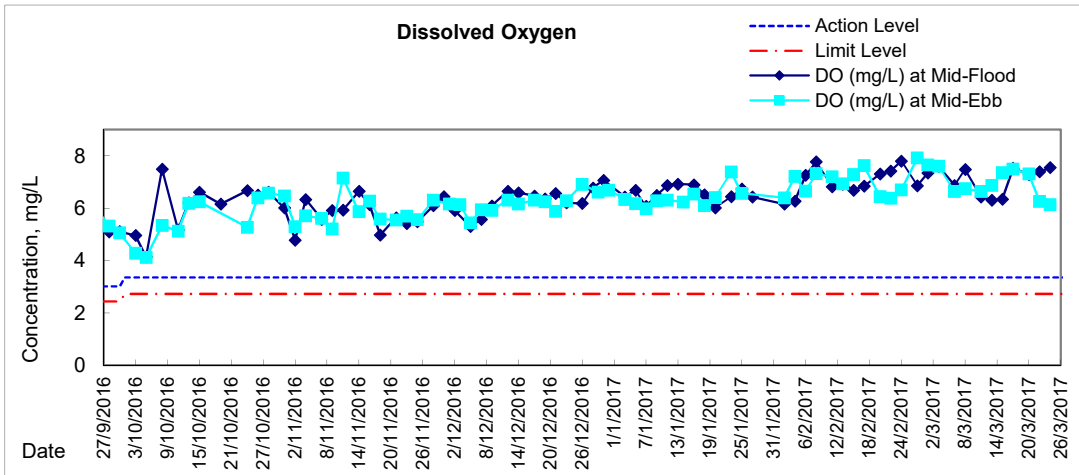


Graphic Presentation of Water Quality Result of P1 - HKCEC Phase I



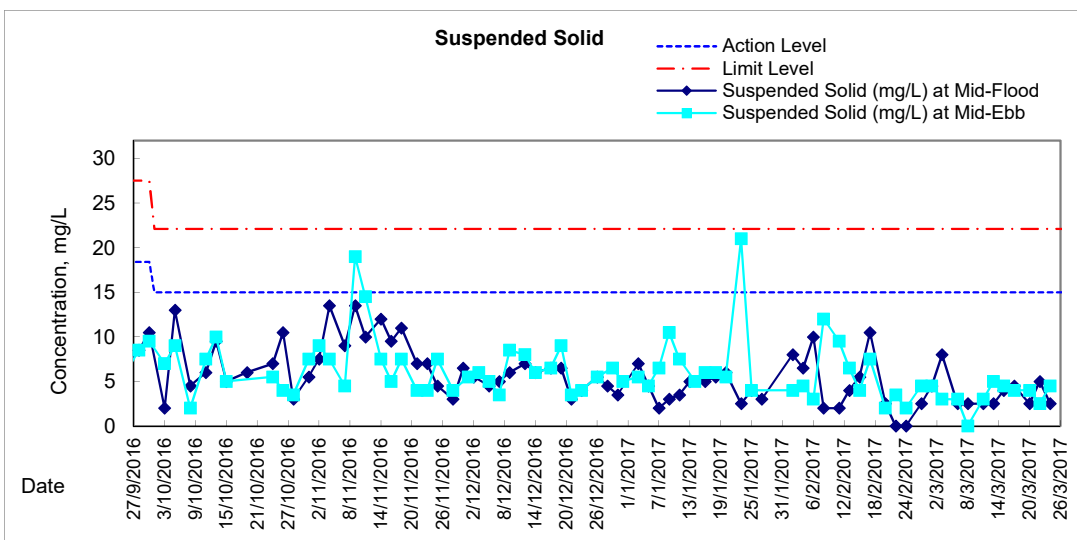
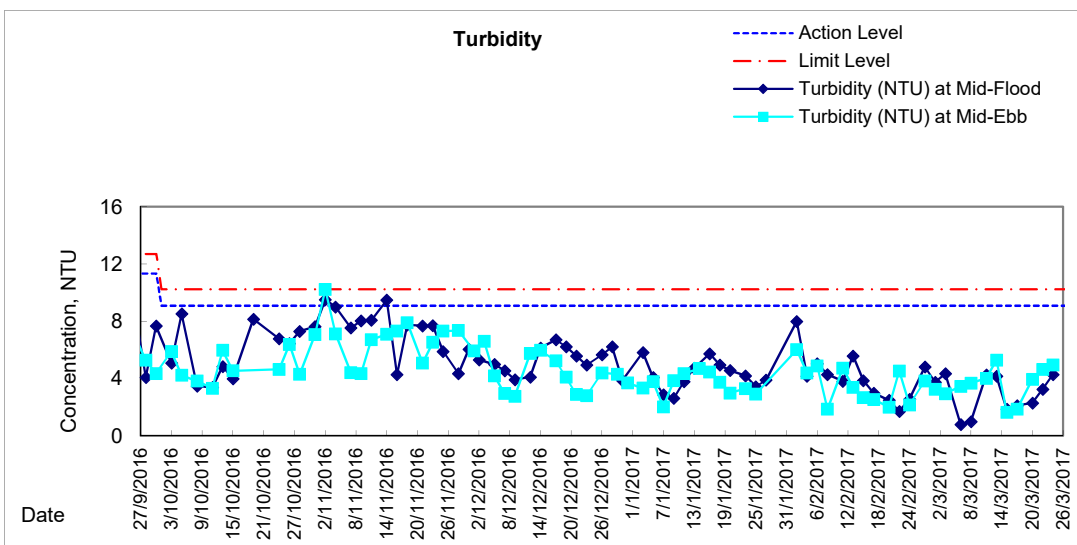
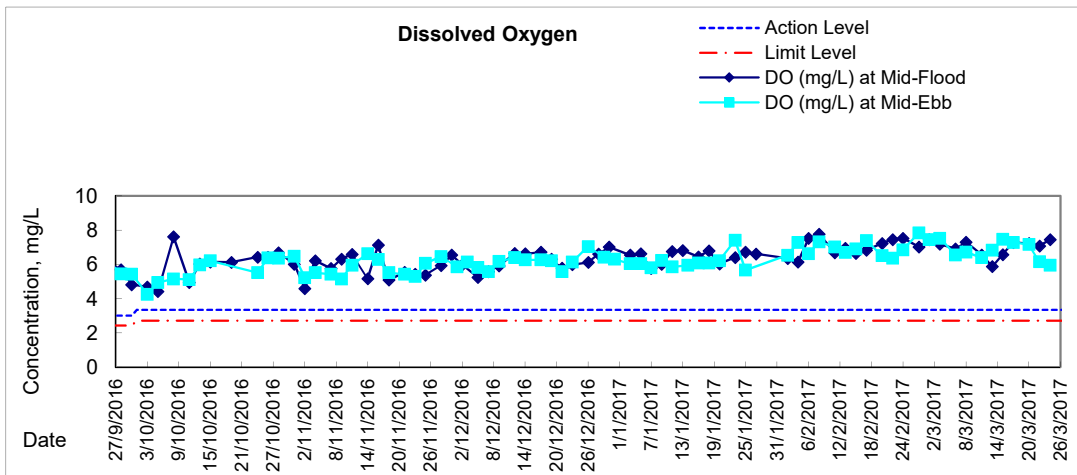


Graphic Presentation of Water Quality Result of P3 - APA



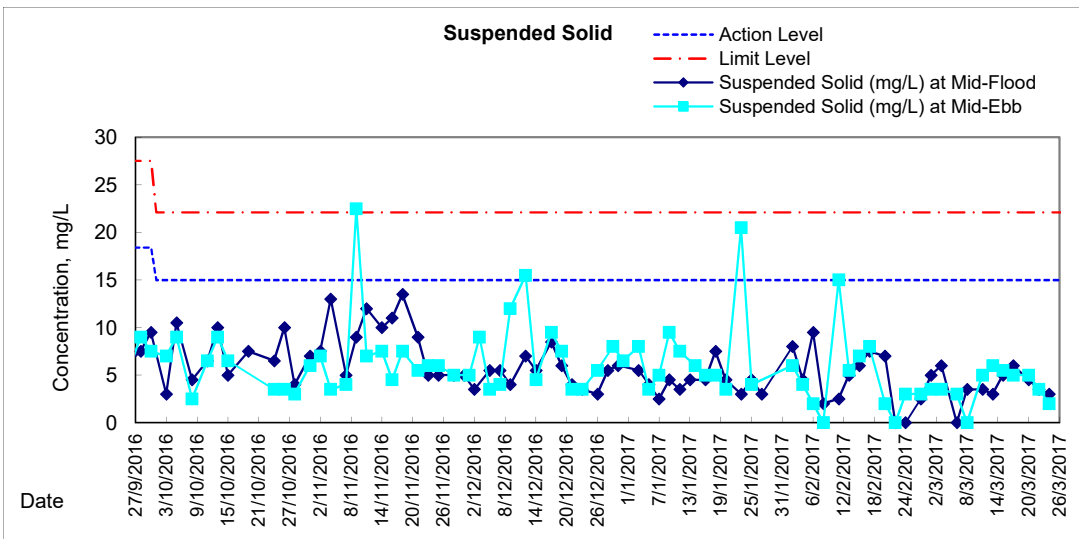
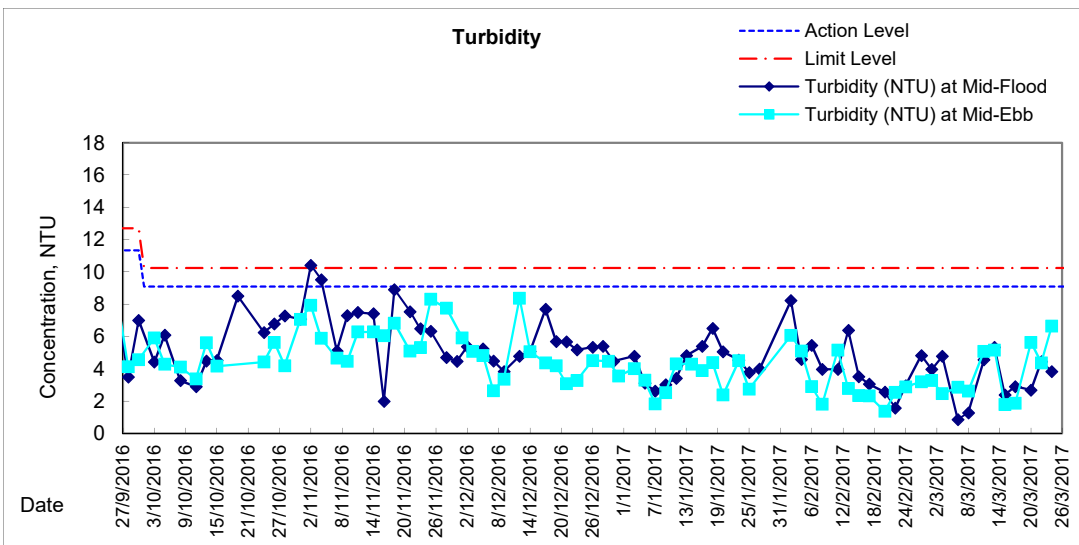
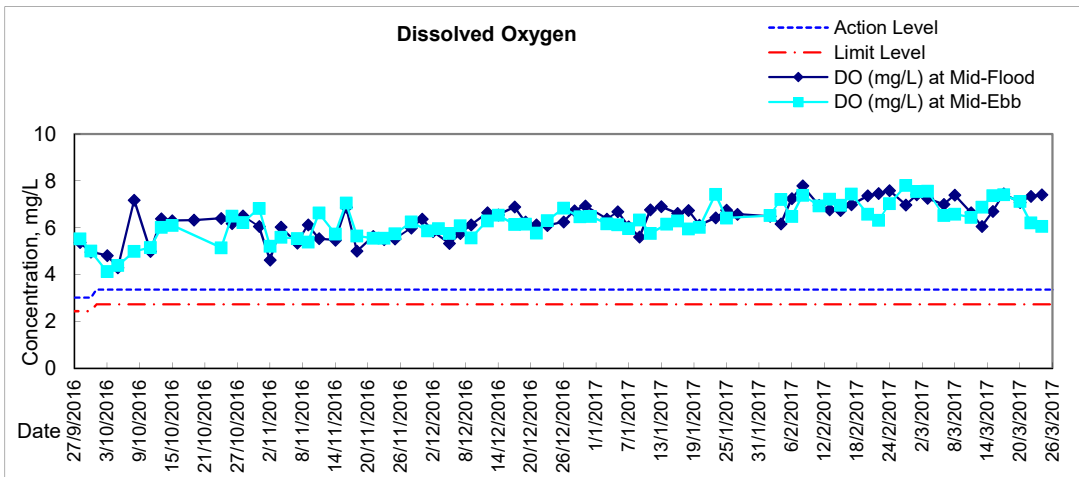


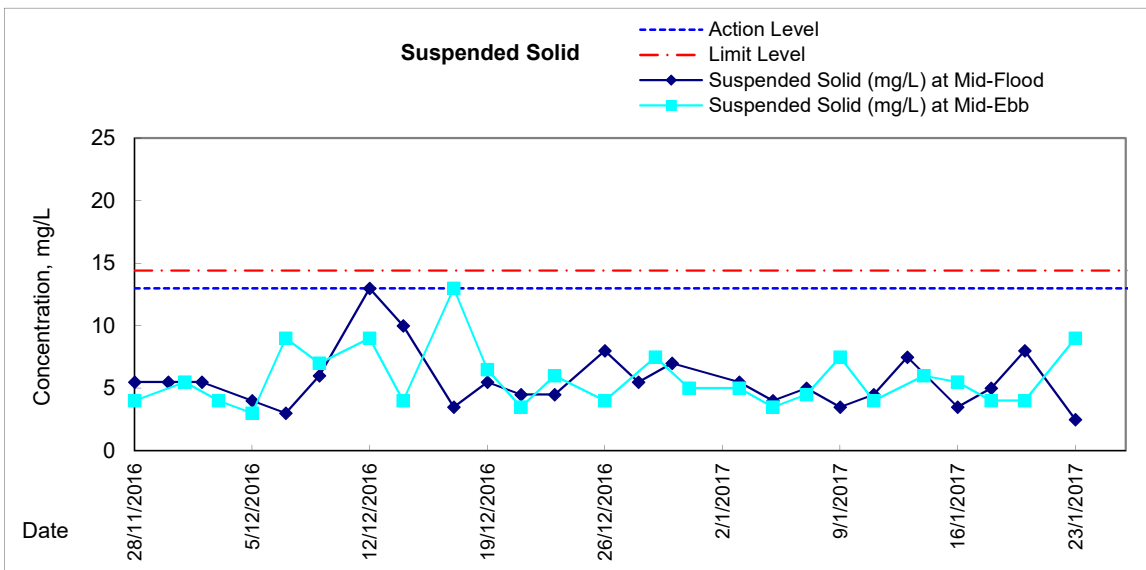
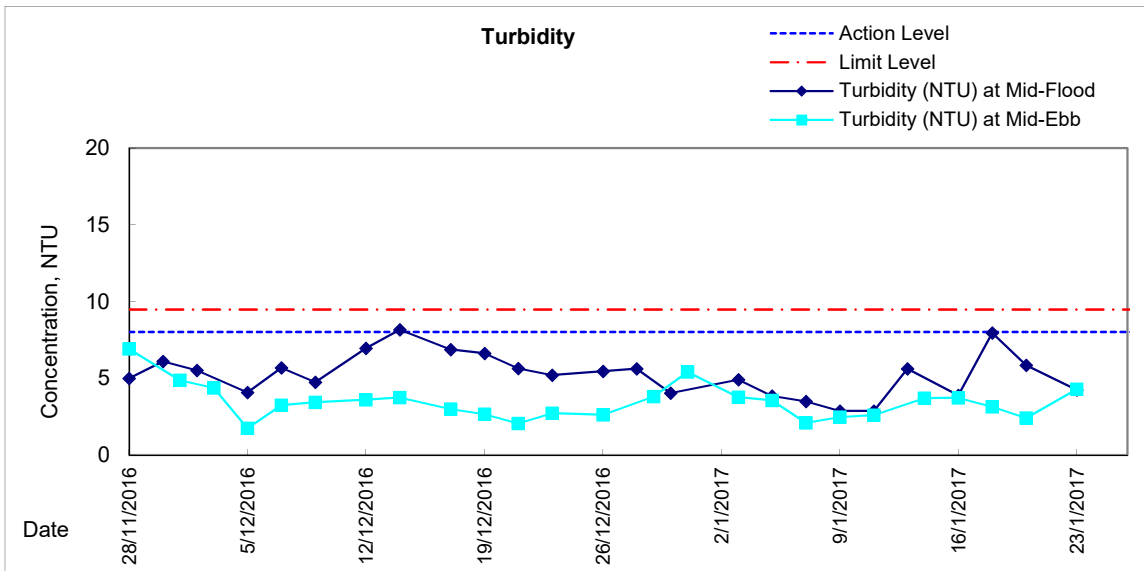
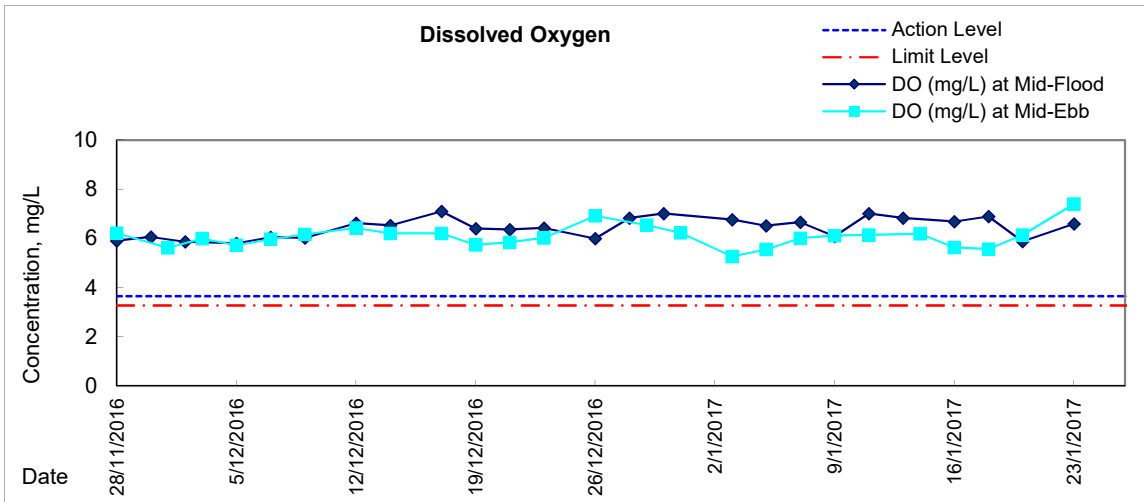
Graphic Presentation of Water Quality Result of P5 - WCT / RT / IT





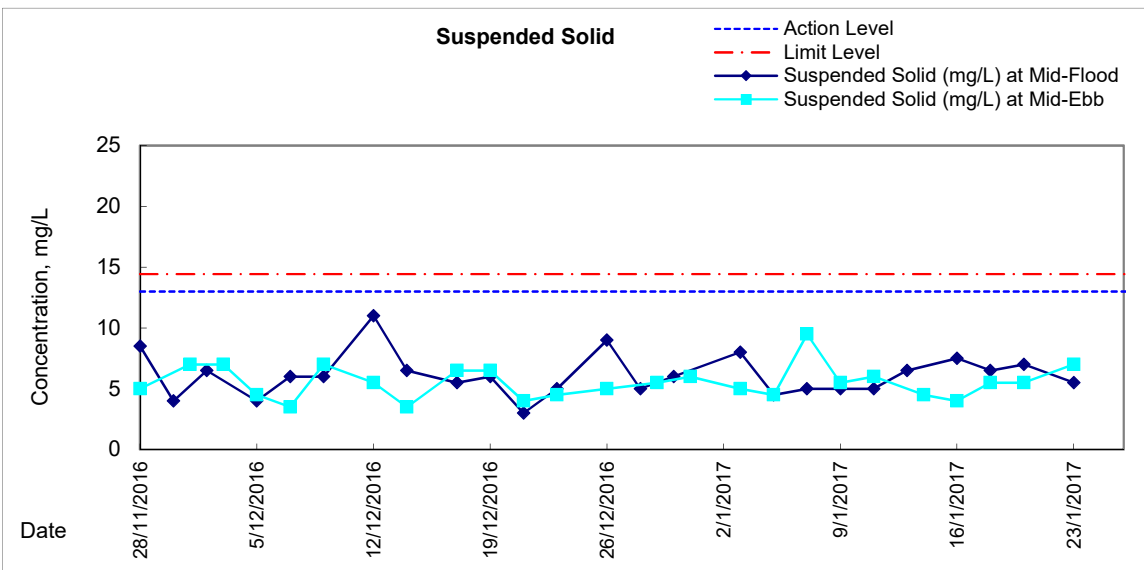
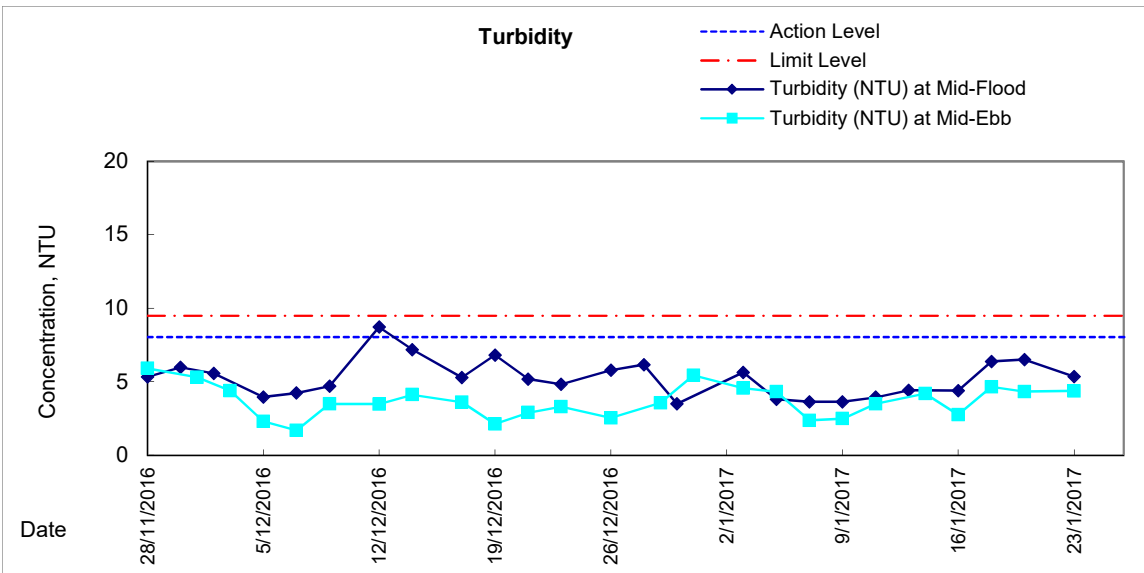
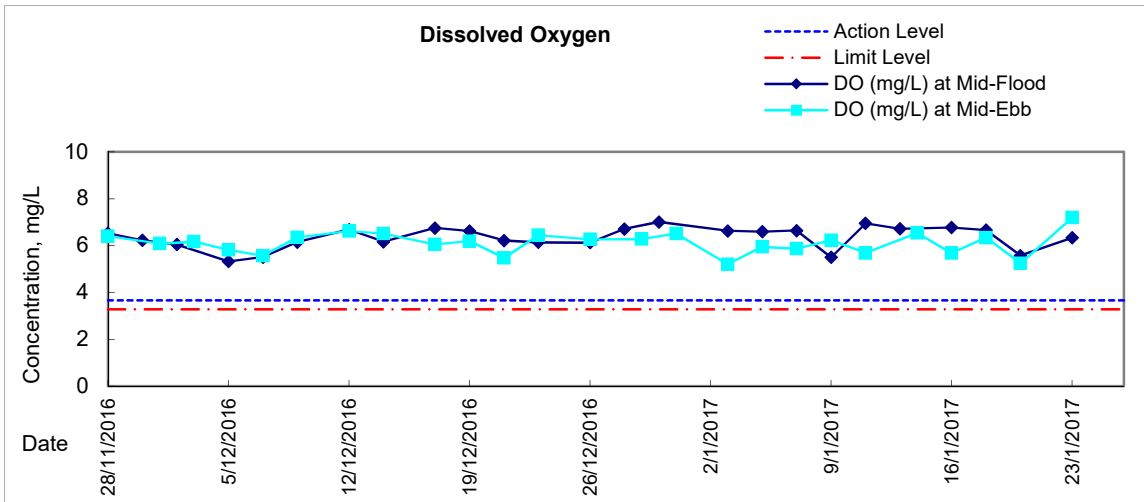
Graphic Presentation of Water Quality Result of P4 - SOC

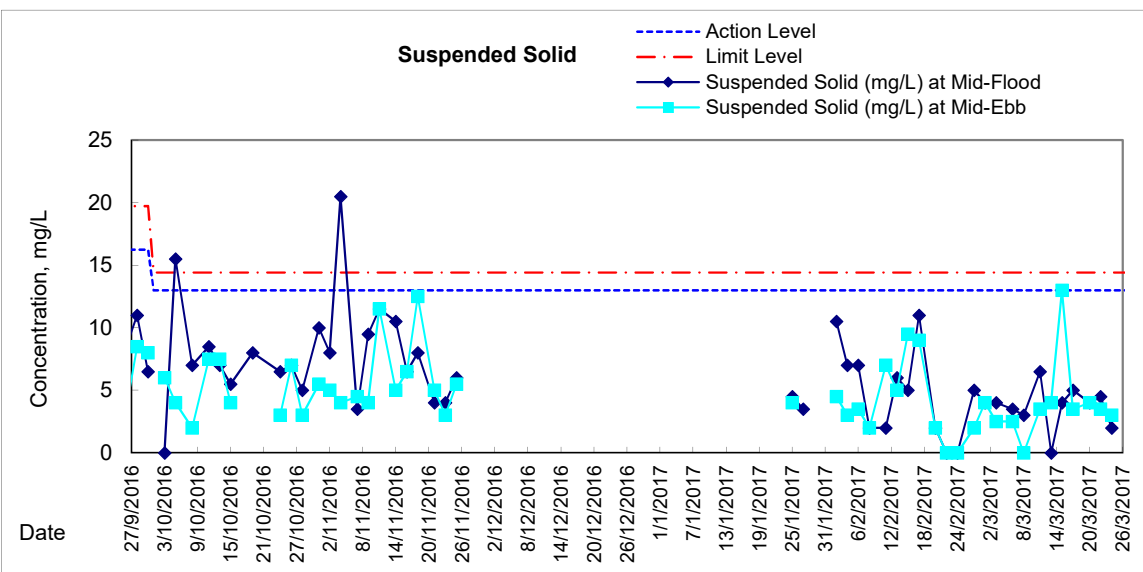
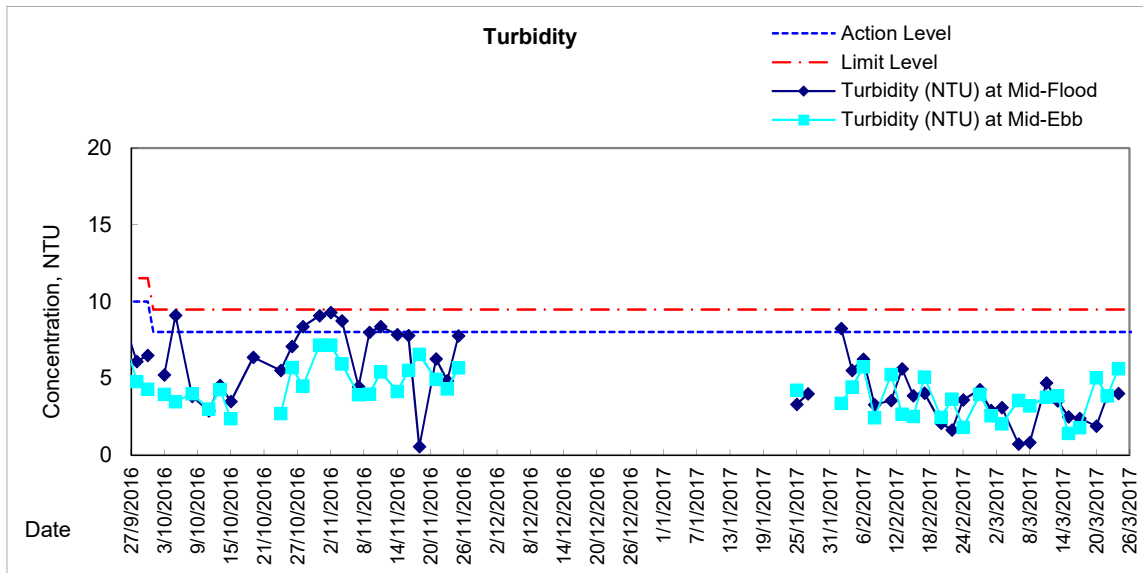
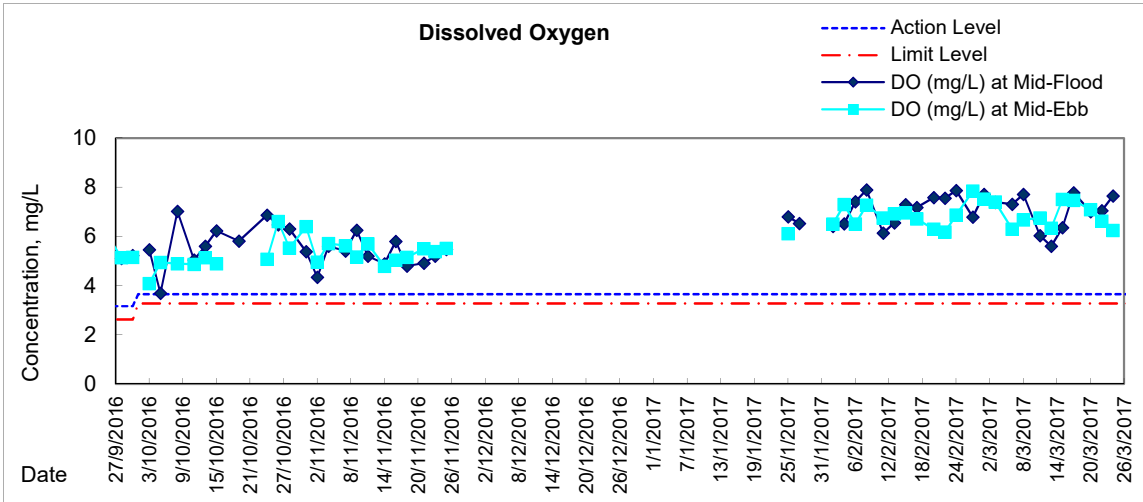






Graphic Presentation of Water Quality Result of RW21-P789E - GEC/CRC/SHK

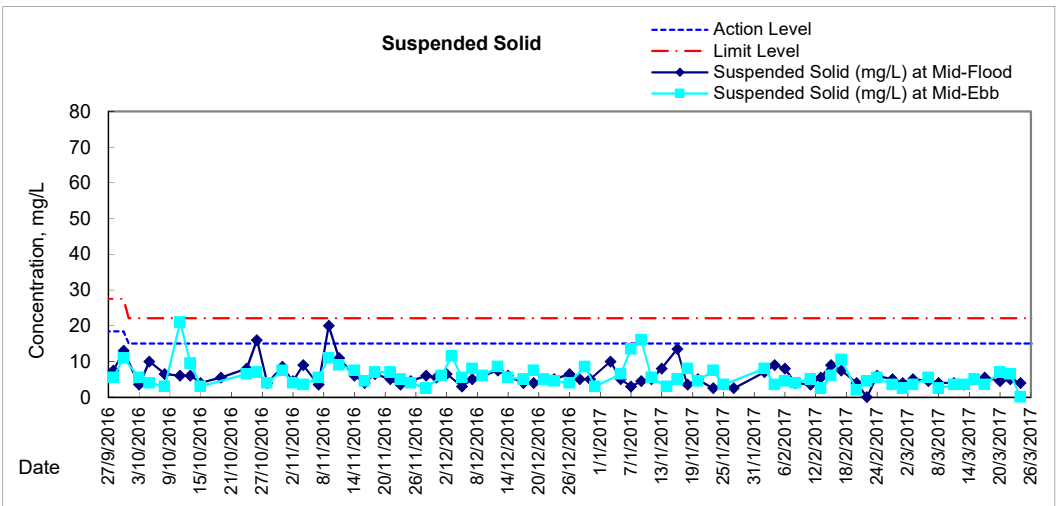
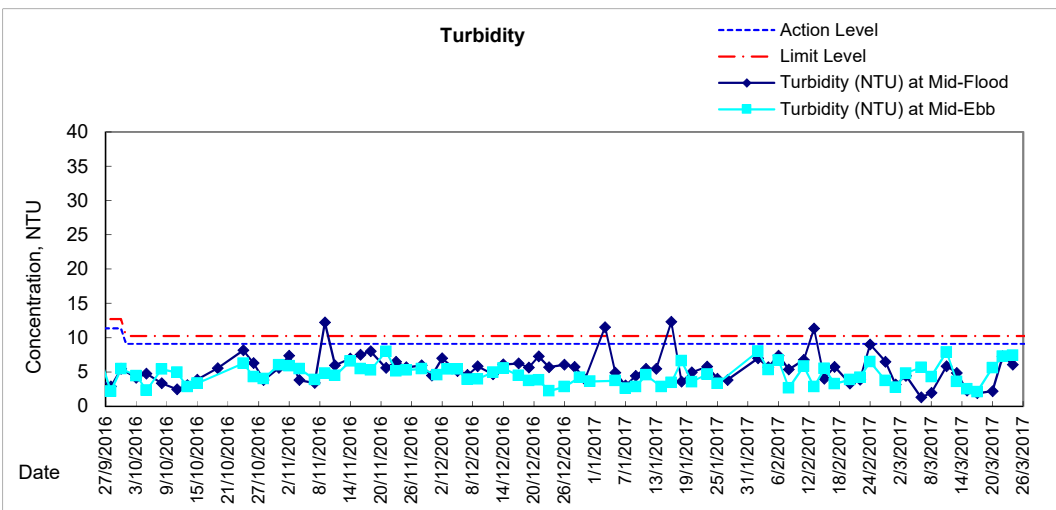
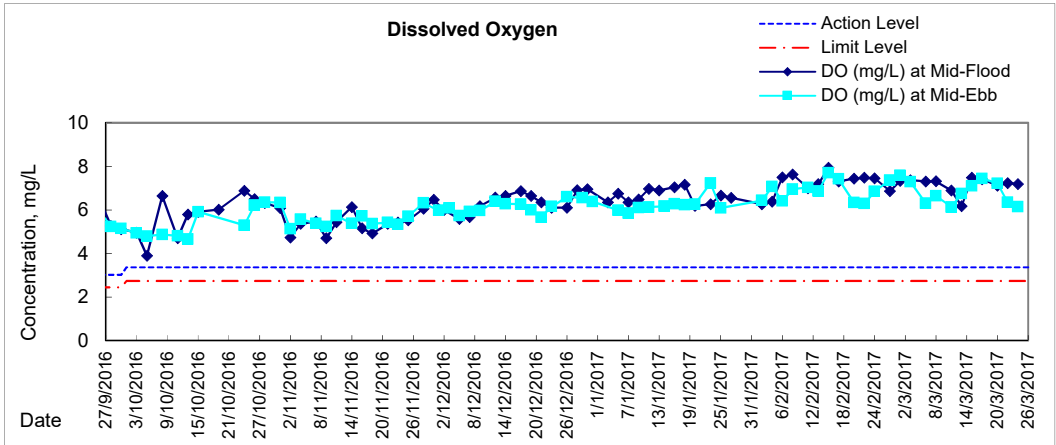




Remarks: With respect to the removal of silt screen system for Cooling Water Intakes P7, P8, P9 and WSD Water Intake RW21, the respective water quality monitoring at monitoring station RW21-P789 was adjusted to RW21-P789 East (RW21-P789E) and RW21-P789 West (RW21-P789W) from 28 November 2016 ebb tide. Due to the reinstatement of the captioned silt screen system, the respective water quality monitoring was reverted to previous monitoring station RW21-P789 from 25 January 2017 onwards.



Graphic Presentation of Water Quality Result of C7 - Windsor House





**Water Monitoring Result at C6 - Excelsior Hotel
Mid-Flood Tide**

Date	Time	Weather Condition	Sampling Depth		Water Temperature			pH			Salinity		DO Saturation			DO			
					°C			-			ppt		%			mg/L			
					Value	Average		Value	Average		Value	Average	Value	Average	Value	Average			
27/2/2017	-	Cloudy	Surface	-	-	-	-	-	-	-	-	-	-	-	-	-	-	-	
	18:20		Middle	1.5	17.00	17.00	17.0	7.85	7.85	7.9	32.59	32.59	32.6	76.9	78.1	77.5	6.24	6.31	6.28
	-		Bottom	-	-	-	-	-	-	-	-	-	-	-	-	-	-	-	-
1/3/2017	-	Fine	Surface	-	-	-	-	-	-	-	-	-	-	-	-	-	-	-	
	9:35		Middle	1.5	17.50	17.50	17.5	8.17	8.17	8.2	30.66	30.66	30.7	95.3	94.3	94.8	7.58	7.50	7.54
	-		Bottom	-	-	-	-	-	-	-	-	-	-	-	-	-	-	-	-
3/3/2017	-	Fine	Surface	-	-	-	-	-	-	-	-	-	-	-	-	-	-	-	
	12:05		Middle	1.5	17.90	17.90	17.9	8.16	8.16	8.2	30.81	30.81	30.8	88.6	88.6	88.6	6.99	6.99	6.99
	-		Bottom	-	-	-	-	-	-	-	-	-	-	-	-	-	-	-	-
6/3/2017	12:45	Cloudy	Surface	1.0	19.60	19.60	19.6	8.19	8.19	8.2	30.15	30.15	30.2	83.1	82.4	82.8	6.41	6.36	6.39
	-		Middle	2.0	-	-	-	-	-	-	-	-	-	-	-	-	-	-	-
	12:47		Bottom	3.0	19.10	19.10	19.1	8.18	8.18	8.2	30.16	30.16	30.2	88.8	89.0	88.9	6.86	6.87	6.87
8/3/2017	15:15	Fine	Surface	1.0	18.20	18.20	18.2	8.31	8.31	8.3	30.53	30.53	30.5	86.3	86.6	86.5	6.77	6.80	6.79
	-		Middle	2.0	-	-	-	-	-	-	-	-	-	-	-	-	-	-	
	15:17		Bottom	3.0	18.20	18.20	18.2	8.29	8.29	8.3	30.25	30.25	30.3	90.7	90.2	90.5	7.11	7.08	7.10
11/3/2017	18:16	Cloudy	Surface	1.0	18.20	18.20	18.2	8.20	8.20	8.2	31.24	31.24	31.2	87.7	85.9	86.8	6.86	6.72	6.79
	-		Middle	2.0	-	-	-	-	-	-	-	-	-	-	-	-	-	-	
	18:18		Bottom	3.0	18.20	18.20	18.2	8.25	8.25	8.3	31.29	31.29	31.3	81.8	80.9	81.4	6.40	6.32	6.36
13/3/2017	-	Cloudy	Surface	-	-	-	-	-	-	-	-	-	-	-	-	-	-	-	
	4:27		Middle	1.0	19.30	19.30	19.3	7.70	7.69	7.7	22.92	22.92	22.9	44.4	45.0	44.7	3.58	3.62	3.60
	-		Bottom	-	-	-	-	-	-	-	-	-	-	-	-	-	-	-	
15/3/2017	10:55	Cloudy	Surface	1.0	18.30	18.30	18.3	8.30	8.30	8.3	31.23	31.23	31.2	82.0	81.3	81.7	6.46	6.40	6.43
	-		Middle	2.0	-	-	-	-	-	-	-	-	-	-	-	-	-	-	
	10:57		Bottom	3.0	17.80	17.80	17.8	8.29	8.29	8.3	31.11	31.11	31.1	87.5	87.7	87.6	6.91	6.92	6.92
17/3/2017	-	Fine	Surface	-	-	-	-	-	-	-	-	-	-	-	-	-	-	-	
	9:10		Middle	1.5	18.00	18.00	18.0	8.27	8.27	8.3	31.28	31.28	31.3	75.8	77.9	76.9	5.95	6.12	6.04
	-		Bottom	-	-	-	-	-	-	-	-	-	-	-	-	-	-	-	
20/3/2017	-	Fine	Surface	-	-	-	-	-	-	-	-	-	-	-	-	-	-	-	
	11:45		Middle	1.5	20.70	20.70	20.7	8.22	8.22	8.2	30.30	30.30	30.3	73.3	73.6	73.5	5.49	5.51	5.50
	-		Bottom	-	-	-	-	-	-	-	-	-	-	-	-	-	-	-	
22/3/2017	9:45	Cloudy	Surface	1.0	18.80	18.80	18.8	8.32	8.32	8.3	30.17	30.17	30.2	81.5	81.2	81.4	6.34	6.32	6.33
	-		Middle	2.0	-	-	-	-	-	-	-	-	-	-	-	-	-	-	
	9:47		Bottom	3.0	18.70	18.70	18.7	8.28	8.28	8.3	30.91	30.91	30.9	88.6	90.1	89.4	6.88	6.99	6.94
24/3/2017	16:00	Fine	Surface	1.0	20.50	20.50	20.5	8.24	8.24	8.2	31.28	31.28	31.3	94.1	94.4	94.3	7.02	7.04	7.03
	-		Middle	2.0	-	-	-	-	-	-	-	-	-	-	-	-	-	-	
	16:02		Bottom	3.0	20.30	20.30	20.3	8.26	8.26	8.3	31.09	31.09	31.1	98.7	98.7	98.7	7.42	7.47	7.45

Remarks:
Single underline denotes exceedance over Action Level.
Double underline denotes exceedance over Limit Level.



**Water Monitoring Result at Ex-WPCWA SW - South-western corners of ex-Public Cargo Works Area
Mid-Flood Tide**

Date	Time	Weather Condition	Sampling Depth m		Water Temperature °C			pH			Salinity ppt		DO Saturation %			DO mg/L			
					Value	Average	Value	Average	Value	Average	Value	Average	Value	Average	Value	Average			
27/2/2017	-	Cloudy	Surface	-	-	-	-	-	-	-	-	-	-	-	-	-	-	-	-
	18:55		Middle	1.0	17.20	17.20	17.2	7.99	7.99	8.0	29.85	29.85	29.9	77.1	77.4	77.3	6.19	6.22	6.21
	-		Bottom	-	-	-	-	-	-	-	-	-	-	-	-	-	-	-	-
1/3/2017	-	Fine	Surface	-	-	-	-	-	-	-	-	-	-	-	-	-	-	-	-
	9:25		Middle	1.0	17.70	17.70	17.7	8.25	8.25	8.3	29.92	29.92	29.9	85.6	85.3	85.5	6.81	6.78	6.80
	-		Bottom	-	-	-	-	-	-	-	-	-	-	-	-	-	-	-	-
3/3/2017	-	Fine	Surface	-	-	-	-	-	-	-	-	-	-	-	-	-	-	-	-
	10:45		Middle	1.0	17.80	17.80	17.8	8.25	8.25	8.3	25.43	25.43	25.4	71.5	71.4	71.5	5.83	5.82	5.83
	-		Bottom	-	-	-	-	-	-	-	-	-	-	-	-	-	-	-	-
6/3/2017	-	Cloudy	Surface	-	-	-	-	-	-	-	-	-	-	-	-	-	-	-	-
	12:25		Middle	1.0	19.40	19.40	19.4	8.12	8.12	8.1	29.65	29.65	29.7	85.1	83.3	84.2	6.56	6.42	6.49
	-		Bottom	-	-	-	-	-	-	-	-	-	-	-	-	-	-	-	-

Remarks:
 Single underline denotes exceedance over Action Level.
 Double underline denotes exceedance over Limit Level.



**Water Monitoring Result at Ex-WPCWA SE - South-eastern corners of ex-Public Cargo Works Area
Mid-Flood Tide**

Date	Time	Weather Condition	Sampling Depth m		Water Temperature °C			pH			Salinity ppt		DO Saturation %			DO mg/L			
					Value	Average	Value	Average	Value	Average	Value	Average	Value	Average	Value	Average			
27/2/2017	19:00	Cloudy	Surface	1.0	17.20	17.20	17.2	8.03	8.03	8.0	29.88	29.88	29.9	77.3	77.7	77.5	6.21	6.25	6.23
	-		Middle	2.0	-	-	-	-	-	-	-	-	-	-	-	-	-	-	-
	19:01		Bottom	3.0	17.20	17.20	17.2	8.11	8.11	8.1	29.90	29.90	29.9	76.8	76.1	76.5	6.16	6.12	6.14
1/3/2017	9:20	Fine	Surface	1.0	17.60	17.60	17.6	8.18	8.18	8.2	29.16	29.16	29.2	83.4	80.7	82.1	6.68	6.46	6.57
	-		Middle	2.0	-	-	-	-	-	-	-	-	-	-	-	-	-	-	-
	9:22		Bottom	3.0	17.50	17.50	17.5	8.20	8.20	8.2	29.87	29.87	29.9	87.6	87.3	87.5	6.99	6.97	6.98
3/3/2017	10:35	Fine	Surface	1.0	17.90	17.90	17.9	8.20	8.20	8.2	27.15	27.15	27.2	79.3	79.5	79.4	6.39	6.40	6.40
	-		Middle	2.0	-	-	-	-	-	-	-	-	-	-	-	-	-	-	-
	10:37		Bottom	3.0	17.70	17.70	17.7	8.20	8.20	8.2	29.35	29.35	29.4	86.6	86.5	86.6	6.91	6.90	6.91
6/3/2017	12:20	Cloudy	Surface	1.0	19.10	19.10	19.1	8.20	8.20	8.2	29.57	29.57	29.6	82.8	82.2	82.5	6.37	6.35	6.36
	-		Middle	2.0	-	-	-	-	-	-	-	-	-	-	-	-	-	-	-
	12:22		Bottom	3.0	19.40	19.40	19.4	8.18	8.18	8.2	29.70	29.70	29.7	87.4	87.4	87.4	6.78	6.78	6.78

Remarks:
 Single underline denotes exceedance over Action Level.
 Double underline denotes exceedance over Limit Level.



**Water Monitoring Result at C6 - Excelsior Hotel
Mid-Ebb Tide**

Date	Time	Weater Condition	Sampling Depth		Water Temperature			pH		Salinity		DO Saturation		DO					
					°C			-		ppt		%		mg/L					
			m	Value	Average	Value	Average	Value	Average	Value	Average	Value	Average	Value	Average				
27/2/2017	-	Fine	Surface	-	-	-	-	-	-	-	-	-	-	-	-	-	-	-	
	11:00		Middle	1.5	17.80	17.80	17.8	8.00	8.00	8.0	30.77	30.77	30.8	93.0	93.0	93.0	7.32	7.32	7.32
	-		Bottom	-	-	-	-	-	-	-	-	-	-	-	-	-	-	-	-
1/3/2017	-	Fine	Surface	-	-	-	-	-	-	-	-	-	-	-	-	-	-	-	
	15:20		Middle	1.5	18.50	18.50	18.5	8.25	8.25	8.3	29.21	29.21	29.2	84.2	83.7	84.0	6.62	6.57	6.60
	-		Bottom	-	-	-	-	-	-	-	-	-	-	-	-	-	-	-	-
3/3/2017	-	Fine	Surface	-	-	-	-	-	-	-	-	-	-	-	-	-	-	-	
	16:20		Middle	1.5	18.30	18.30	18.3	8.24	8.24	8.2	28.86	28.86	28.9	79.0	79.2	79.1	6.25	6.26	6.26
	-		Bottom	-	-	-	-	-	-	-	-	-	-	-	-	-	-	-	-
6/3/2017	-	Cloudy	Surface	-	-	-	-	-	-	-	-	-	-	-	-	-	-	-	
	17:50		Middle	1.5	19.30	19.30	19.3	7.84	7.84	7.8	29.93	29.93	29.9	70.8	70.4	70.6	5.46	5.43	5.45
	-		Bottom	-	-	-	-	-	-	-	-	-	-	-	-	-	-	-	-
8/3/2017	-	Cloudy	Surface	-	-	-	-	-	-	-	-	-	-	-	-	-	-	-	
	21:03		Middle	1.0	17.50	17.50	17.5	7.85	7.85	7.9	30.29	30.29	30.3	66.4	66.6	66.5	5.34	5.36	5.35
	-		Bottom	-	-	-	-	-	-	-	-	-	-	-	-	-	-	-	-
11/3/2017	-	Cloudy	Surface	-	-	-	-	-	-	-	-	-	-	-	-	-	-	-	
	12:26		Middle	1.0	18.60	18.60	18.6	8.24	8.24	8.2	30.49	30.49	30.5	79.4	75.8	77.6	6.20	5.91	6.06
	-		Bottom	-	-	-	-	-	-	-	-	-	-	-	-	-	-	-	-
13/3/2017	-	Cloudy	Surface	-	-	-	-	-	-	-	-	-	-	-	-	-	-	-	
	11:40		Middle	1.0	19.70	19.70	19.7	8.21	8.21	8.2	30.38	30.38	30.4	81.0	81.1	81.1	6.18	6.18	6.18
	-		Bottom	-	-	-	-	-	-	-	-	-	-	-	-	-	-	-	-
15/3/2017	-	Cloudy	Surface	-	-	-	-	-	-	-	-	-	-	-	-	-	-	-	
	15:10		Middle	1.5	18.20	18.20	18.2	8.28	8.28	8.3	30.88	30.88	30.9	94.0	93.9	94.0	7.36	7.35	7.36
	-		Bottom	-	-	-	-	-	-	-	-	-	-	-	-	-	-	-	-
17/3/2017	-	Fine	Surface	-	-	-	-	-	-	-	-	-	-	-	-	-	-	-	
	15:45		Middle	1.5	18.80	18.80	18.8	8.25	8.25	8.3	29.11	29.11	29.1	72.5	72.4	72.5	5.70	5.69	5.70
	-		Bottom	-	-	-	-	-	-	-	-	-	-	-	-	-	-	-	-
20/3/2017	-	Fine	Surface	-	-	-	-	-	-	-	-	-	-	-	-	-	-	-	
	18:20		Middle	1.5	19.80	19.80	19.8	8.23	8.23	8.2	30.52	30.52	30.5	70.5	70.4	70.5	5.36	5.35	5.36
	-		Bottom	-	-	-	-	-	-	-	-	-	-	-	-	-	-	-	-
22/3/2017	-	Cloudy	Surface	-	-	-	-	-	-	-	-	-	-	-	-	-	-	-	
	18:45		Middle	1.5	19.10	19.10	19.1	8.11	8.11	8.1	29.86	29.86	29.9	76.4	76.9	76.7	5.92	5.96	5.94
	-		Bottom	-	-	-	-	-	-	-	-	-	-	-	-	-	-	-	-
24/3/2017	-	Cloudy	Surface	-	-	-	-	-	-	-	-	-	-	-	-	-	-	-	
	20:30		Middle	1.5	21.30	21.30	21.3	7.99	7.99	8.0	29.96	29.96	30.0	54.2	55.6	54.9	4.03	4.13	4.08
	-		Bottom	-	-	-	-	-	-	-	-	-	-	-	-	-	-	-	-

Remarks:
Single underline denotes exceedance over Action Level.
Double underline denotes exceedance over Limit Level.



**Water Monitoring Result at Ex-WPCWA SW - South-western corners of ex-Public Cargo Works Area
Mid-Ebb Tide**

Date	Time	Weater Condition	Sampling Depth		Water Temperature			pH		Salinity		DO Saturation		DO					
					°C			-		ppt		%		mg/L					
			m	Value	Average	Value	Average	Value	Average	Value	Average	Value	Average						
27/2/2017	-	Fine	Surface	-	-	-	-	-	-	-	-	-	-	-	-	-	-	-	
	14:30		Middle	1.0	18.20	18.20	18.2	8.18	8.18	8.2	26.78	26.78	26.8	82.1	80.2	81.2	6.59	6.43	6.51
	-		Bottom	-	-	-	-	-	-	-	-	-	-	-	-	-	-	-	-
1/3/2017	-	Fine	Surface	-	-	-	-	-	-	-	-	-	-	-	-	-	-	-	
	15:06		Middle	1.0	18.40	18.40	18.4	8.21	8.21	8.2	28.67	28.67	28.7	82.6	82.4	82.5	6.53	6.51	6.52
	-		Bottom	-	-	-	-	-	-	-	-	-	-	-	-	-	-	-	-
3/3/2017	-	Fine	Surface	-	-	-	-	-	-	-	-	-	-	-	-	-	-	-	
	15:56		Middle	1.0	18.20	18.20	18.2	8.27	8.27	8.3	29.23	29.23	29.2	77.8	77.1	77.5	6.15	6.00	6.08
	-		Bottom	-	-	-	-	-	-	-	-	-	-	-	-	-	-	-	-

Remarks:
Single underline denotes exceedance over Action Level.
Double underline denotes exceedance over Limit Level.



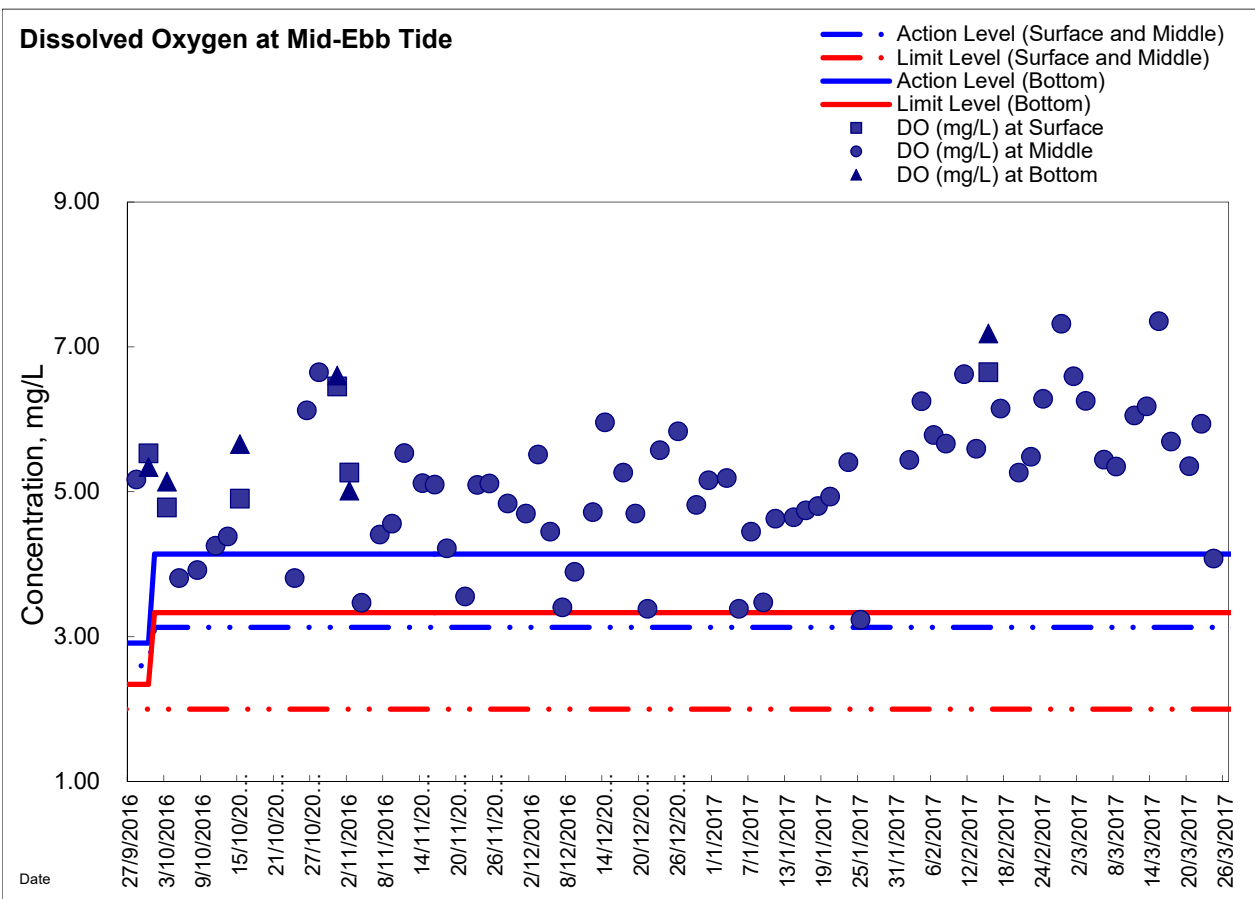
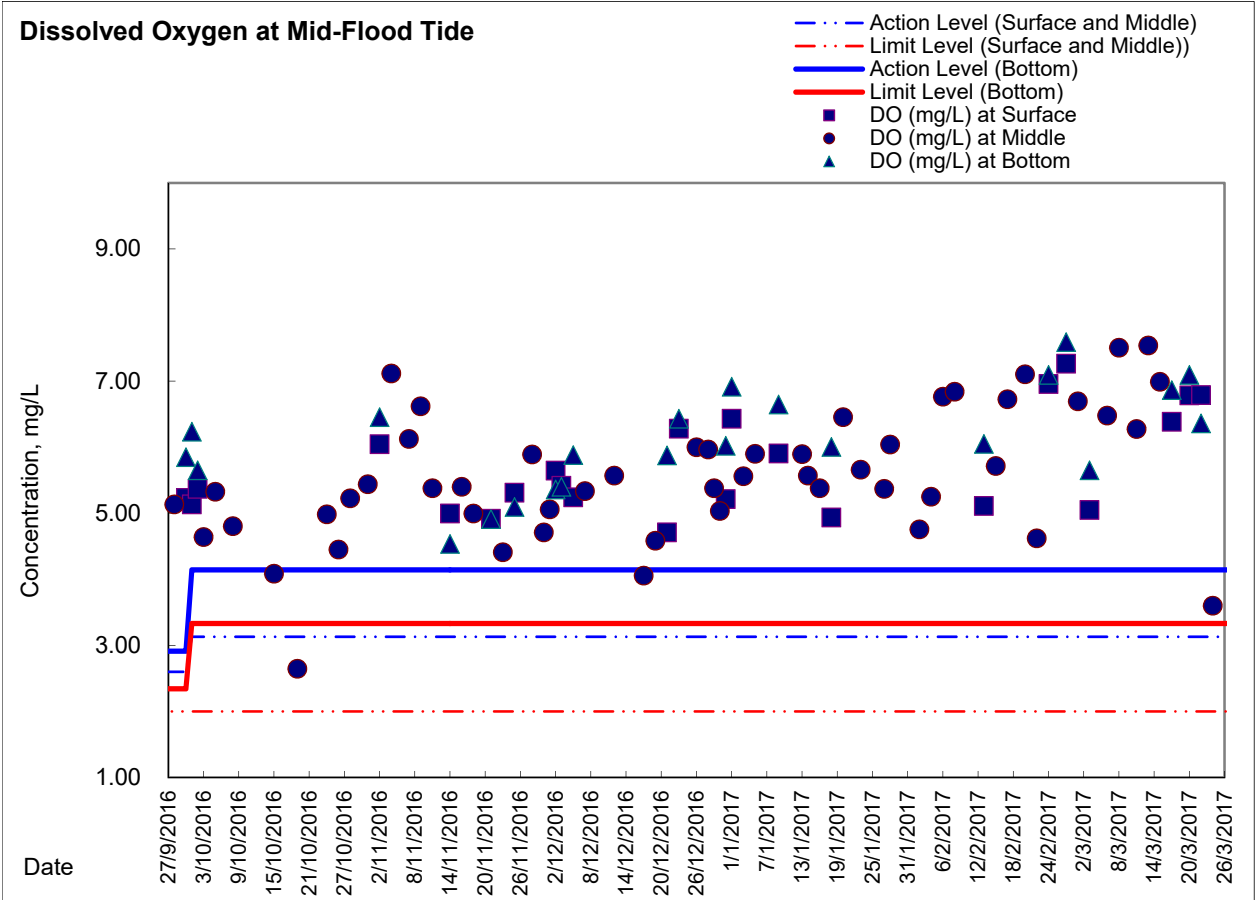
**Water Monitoring Result at Ex-WPCWA SE - South-eastern corners of ex-Public Cargo Works Area
Mid-Ebb Tide**

Date	Time	Weater Condition	Sampling Depth		Water Temperature			pH			Salinity		DO Saturation			DO			
					°C			-			ppt		%			mg/L			
			m	Value	Average	Value	Average	Value	Average	Value	Average	Value	Average	Value	Average				
27/2/2017	14:35	Fine	Surface	1.0	17.30	17.30	17.3	8.18	8.18	8.2	29.89	29.89	29.9	93.1	93.2	93.2	7.47	7.47	7.47
	-		Middle	2.0	-	-	-	-	-	-	-	-	-	-	-	-	-	-	-
	14:37		Bottom	3.0	17.10	17.10	17.1	8.22	8.22	8.2	30.95	30.95	31.0	97.2	97.2	97.2	7.78	7.77	7.78
1/3/2017	15:00	Fine	Surface	1.0	19.50	19.50	19.5	8.28	8.28	8.3	21.80	21.80	21.8	59.3	59.0	59.2	4.28	4.25	4.27
	-		Middle	2.0	-	-	-	-	-	-	-	-	-	-	-	-	-	-	-
	15:02		Bottom	3.0	18.40	18.40	18.4	8.11	8.11	8.1	28.92	28.92	28.9	86.9	86.3	86.6	6.85	6.80	6.83
3/3/2017	15:58	Fine	Surface	1.0	18.10	18.10	18.1	8.27	8.27	8.3	25.98	25.98	26.0	75.0	75.3	75.2	6.06	6.09	6.08
	-		Middle	2.0	-	-	-	-	-	-	-	-	-	-	-	-	-	-	-
	16:00		Bottom	3.0	17.70	17.70	17.7	8.18	8.18	8.2	28.14	28.14	28.1	86.3	85.9	86.1	6.91	6.88	6.90

Remarks:
 Single underline denotes exceedance over Action Level.
 Double underline denotes exceedance over Limit Level.

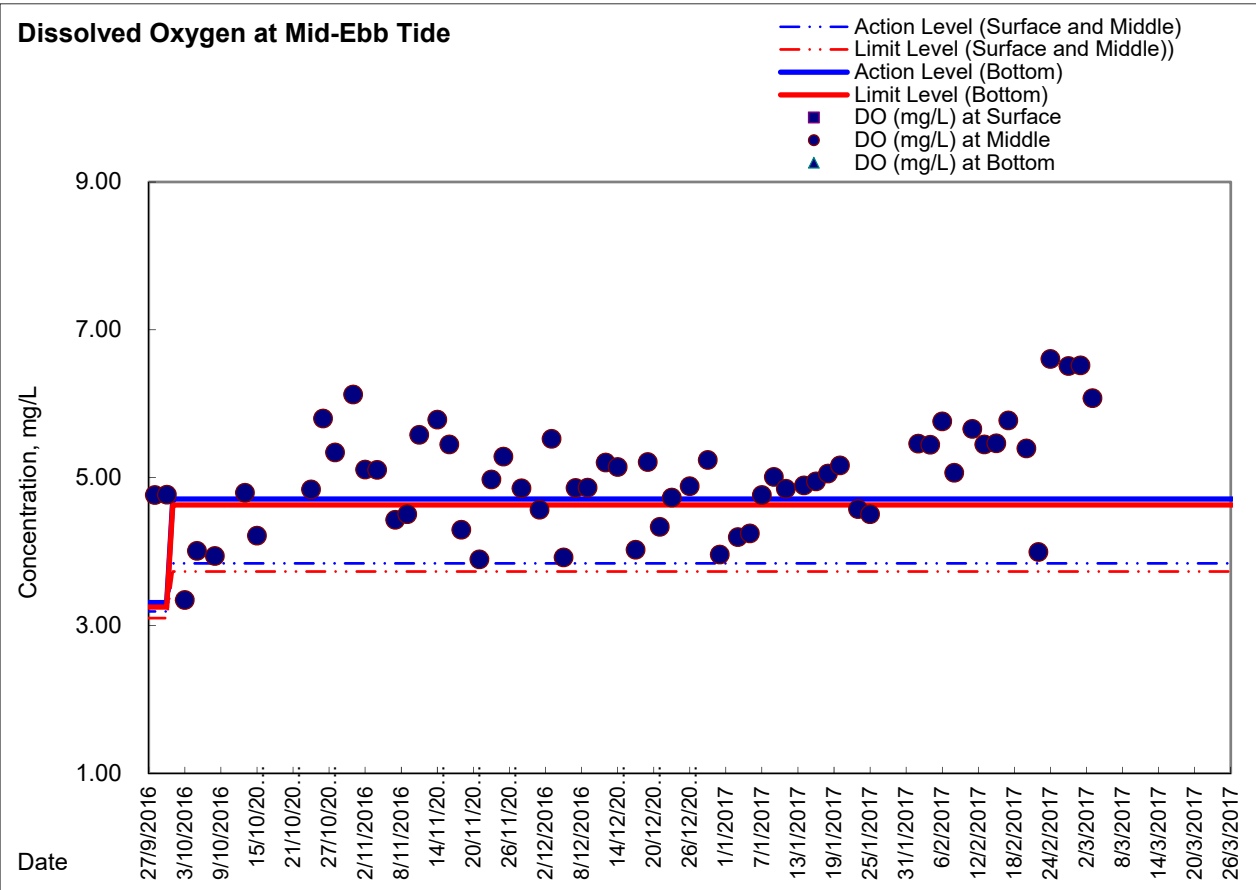
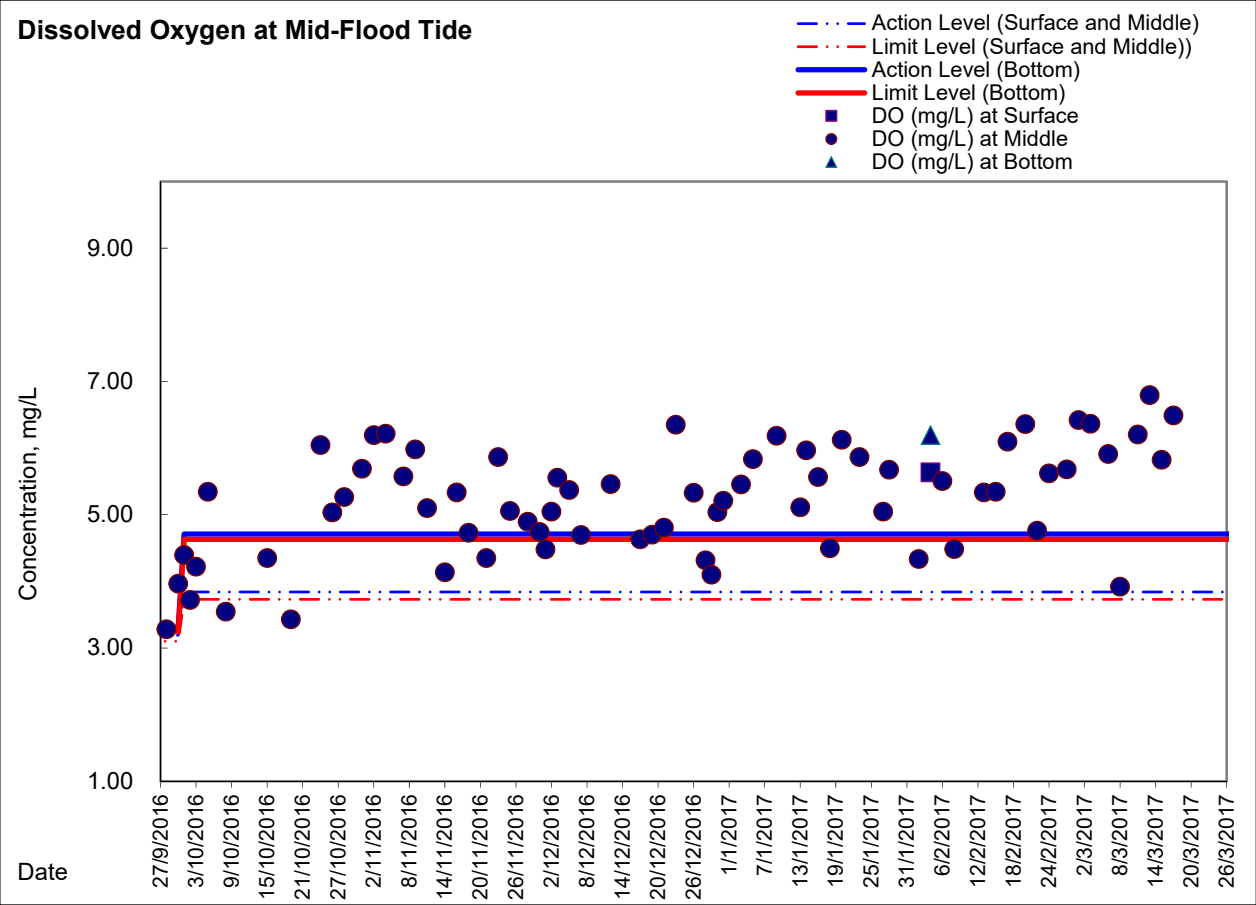


Graphic Presentation of Enhanced Water Monitoring Results (DO) at C6 - Excelsior Hotel





Graphic Presentation of Enhanced Water Monitoring Results (DO) at Ex-WPCWA SW - South-western corners of ex-Public Cargo Works Area



**Graphic Presentation of Enhanced Water Monitoring Results (DO) at Ex-WPCWA SE
- South-eastern corners of ex-Public Cargo Works Area**

